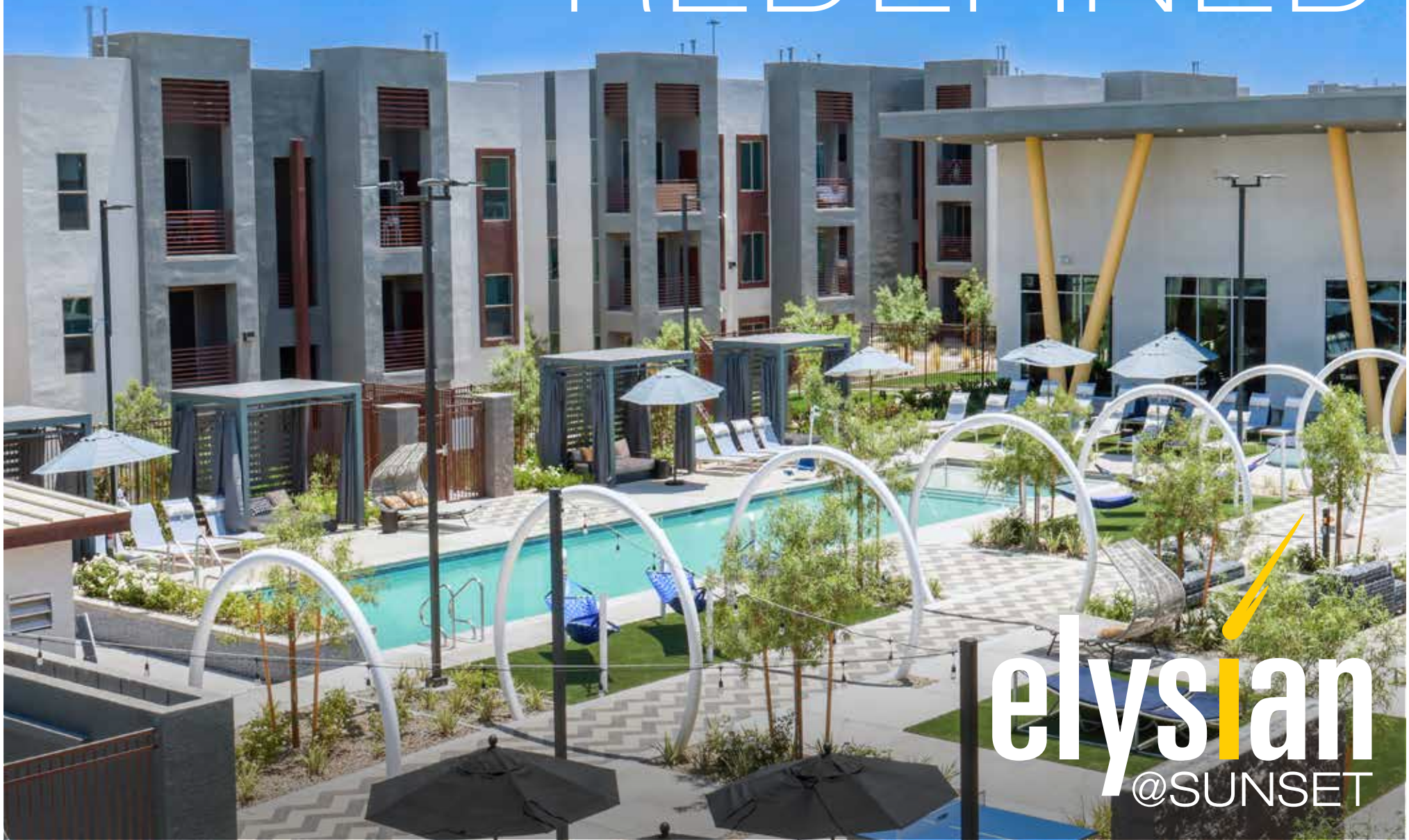
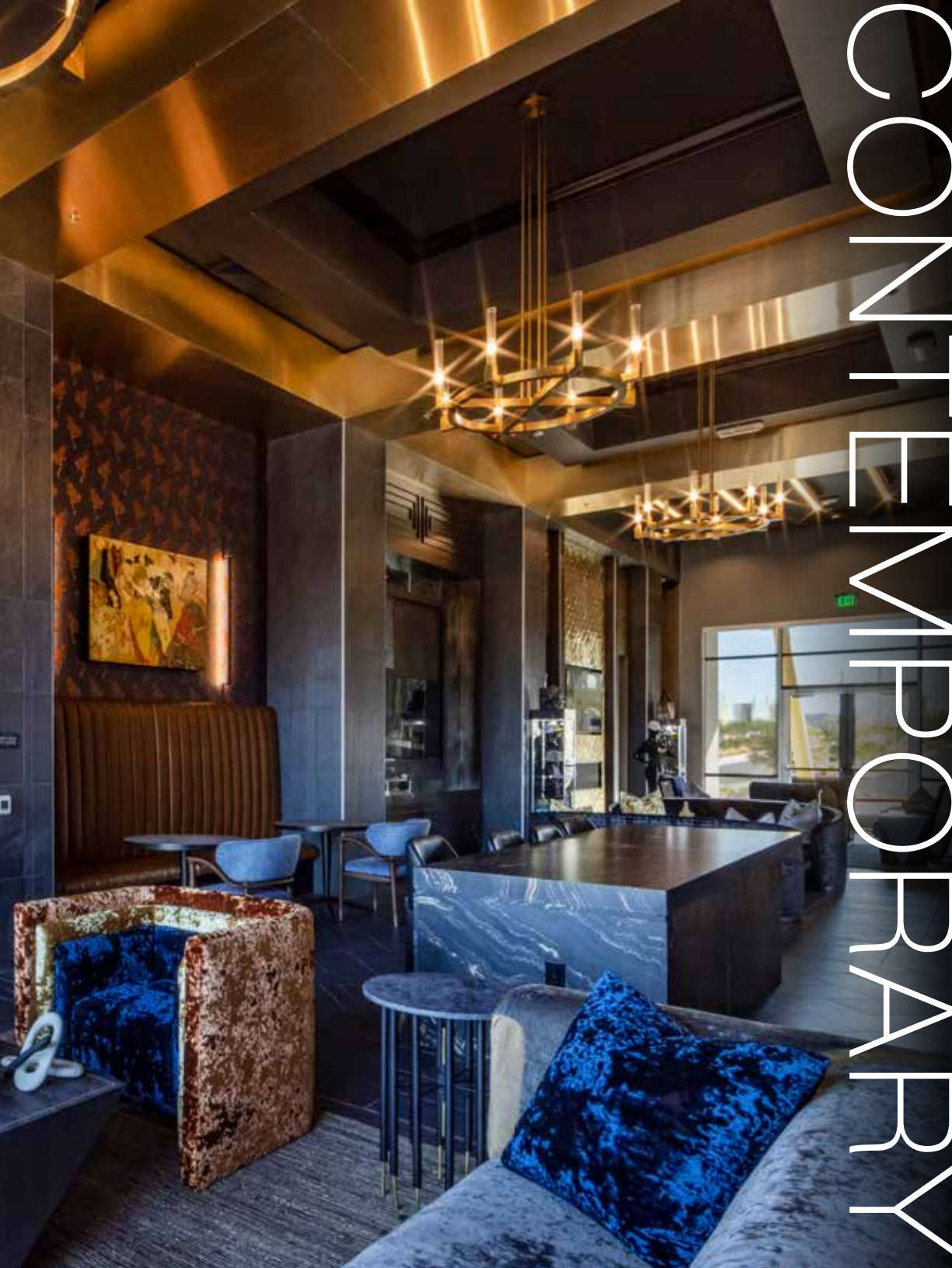


LUXURY REDEFINED



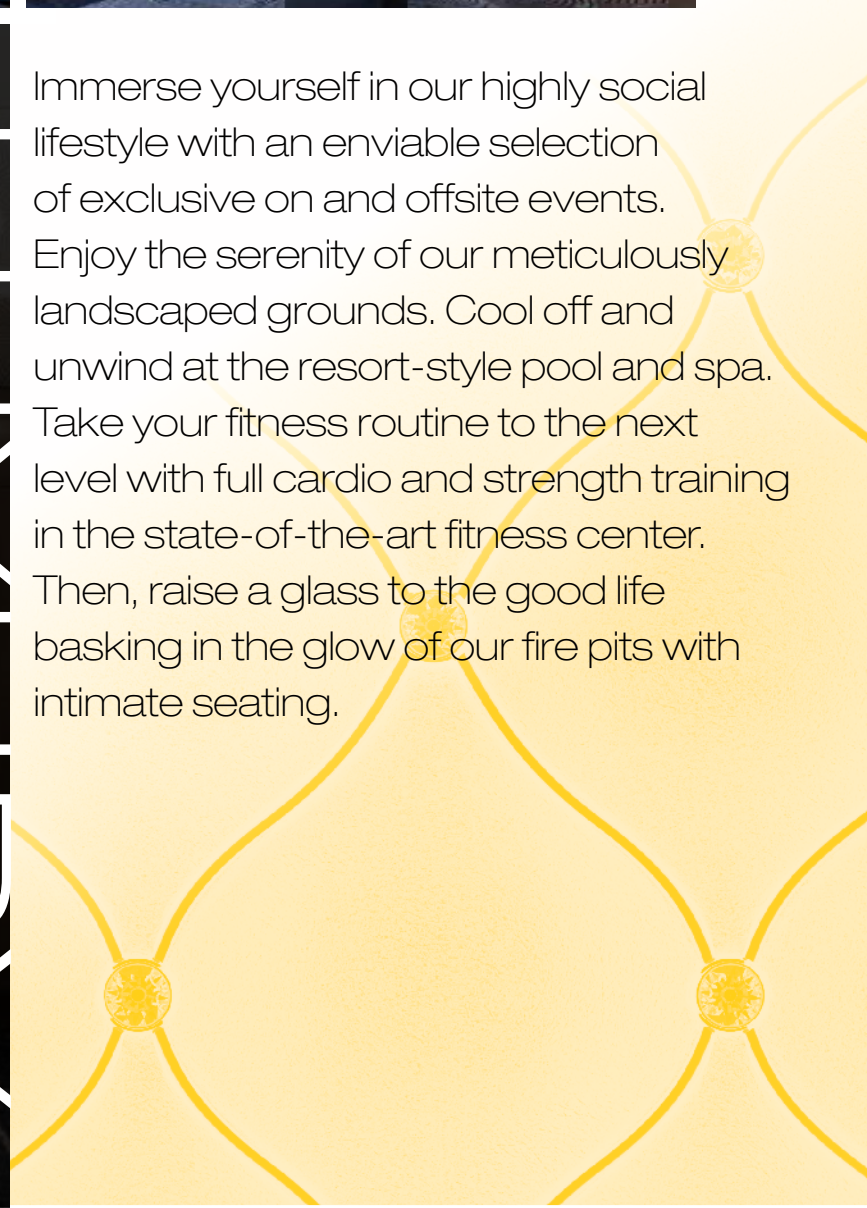
elysian
@SUNSET



COMMUNITY PROPERTY

For those who enjoy the finer things in life, we present **Elysian at Sunset!** A brand-new residential community conveniently located between the bright lights of The Las Vegas Strip and majestic Red Rock Canyon.

Conceptualized by Calida Studios, known for their modern aesthetic and sophisticated designs, this collection of luxurious apartment homes provides idyllic living for any lifestyle. Stunning one, two and three-bedroom residences are well-appointed with designer fixtures, stainless-steel appliances, quartz counter tops, 9-foot ceilings and spacious balconies!



LUXURY

Immerse yourself in our highly social lifestyle with an enviable selection of exclusive on and offsite events. Enjoy the serenity of our meticulously landscaped grounds. Cool off and unwind at the resort-style pool and spa. Take your fitness routine to the next level with full cardio and strength training in the state-of-the-art fitness center. Then, raise a glass to the good life basking in the glow of our fire pits with intimate seating.

Attuned to your every need, **Elysian at Sunset** is thoughtfully created with your convenience in mind. With easy access to the 215, you're just minutes away from the best in dining, shopping, entertainment, parks, golf, award-winning schools and more!

THE HOME YOU'VE IMAGINED. THE LIFESTYLE YOU DESERVE.

Community Features

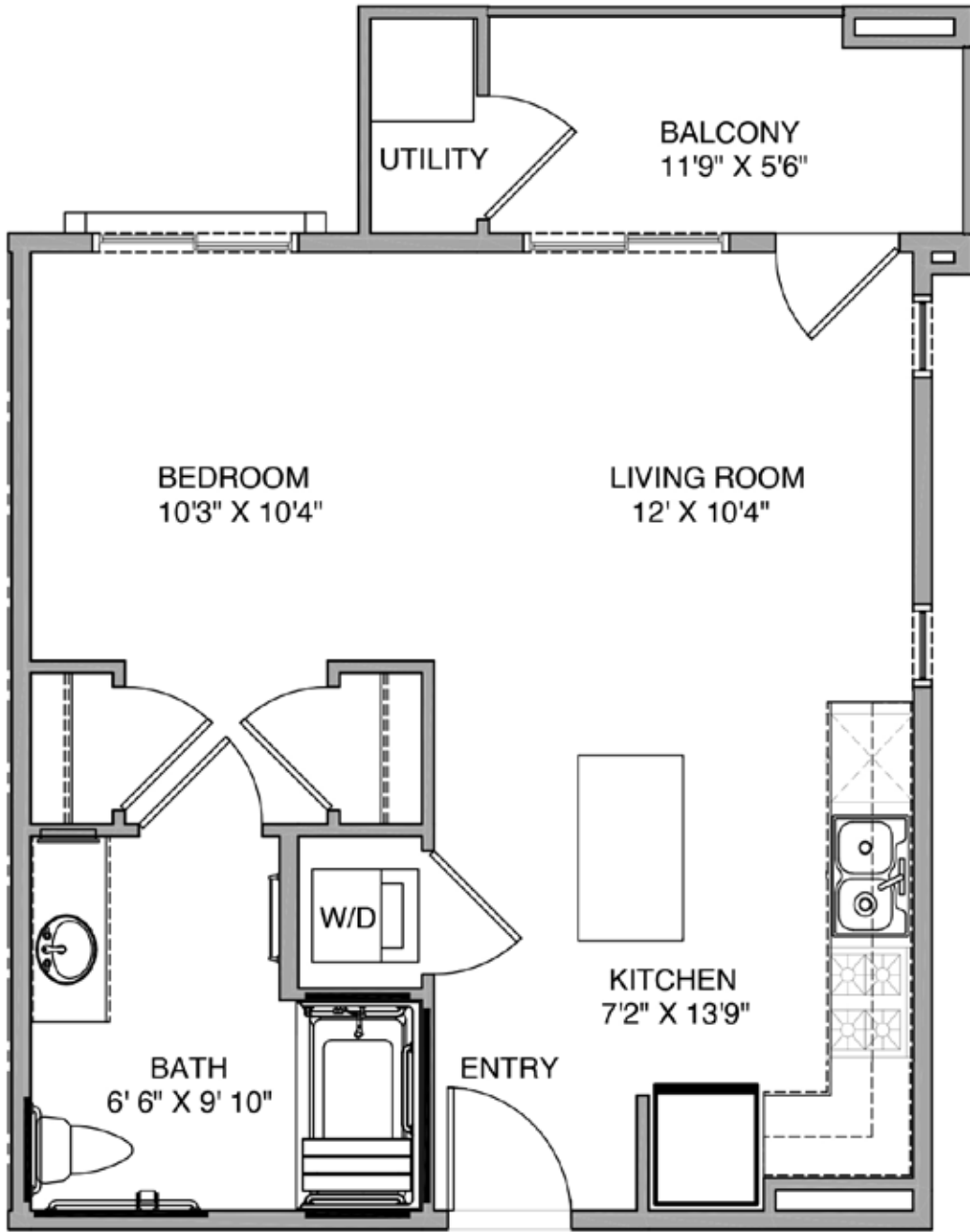
- Designed by Calida Studios
- Highly social lifestyle
- Lushly landscaped resort-style pool, spa, and recreation decks
- Private poolside cabanas
- Outdoor kitchen with BBQ grills, kegerator, under counter refrigerator & bar seating
- Separate garages available
- Seating areas with 75" TVs
- Intimate seating areas with fire pits-
- Outdoor volleyball court
- Picnic and BBQ areas
- Dog area
- Hammock farm
- Concierge services to cater to personalized resident needs
- Smoke free
- 9,000 square foot clubhouse featuring:
 - Wi-Fi lounge
 - Game lounge with arcade machines
 - Billiards and shuffleboard
 - Hospitality / coffee lounge
 - Workspace / business center
 - Resident lobby
 - Full cardio and strength training facility
 - Massage room
 - Tanning room
- Pet friendly dogs of all sizes*

Residence Amenities

- Minimum 9-foot ceilings in all units
- Contemporary designer fixtures and hardware including upgraded cabinetry and quartz countertops in all kitchens and bathrooms
- Stainless steel appliances, including microwave, dishwasher, range, and refrigerator/freezer
- Full height backsplash in kitchen
- Kitchen cabinets featuring extra-large pot drawers and pull-out trash drawers
- Pantry closets
- Under mount sinks in kitchen and bathrooms
- Spacious balconies offering pool and courtyard views
- Over-sized tub in all units
- Glass showers in select units
- Full size showers in select units
- State-of-the-art LED lighting
- Wood-inspired luxury vinyl plank flooring in the kitchen, bathroom and living areas
- Plush wall-to-wall carpeting in bedrooms and bedroom closets
- Custom designed walk-in closets in all units
- Coat closets in all units
- Pre-wired for telephone, cable TV, high-speed internet access and ceiling fans
- Discounted cable and high-speed internet service through Cox partnership
- Stacked in-unit washer/dryer
- Individual climate control
- Sprinkler system for fire safety
- Storage spaces available

* Some breed restrictions may apply. Contact leasing team for details.

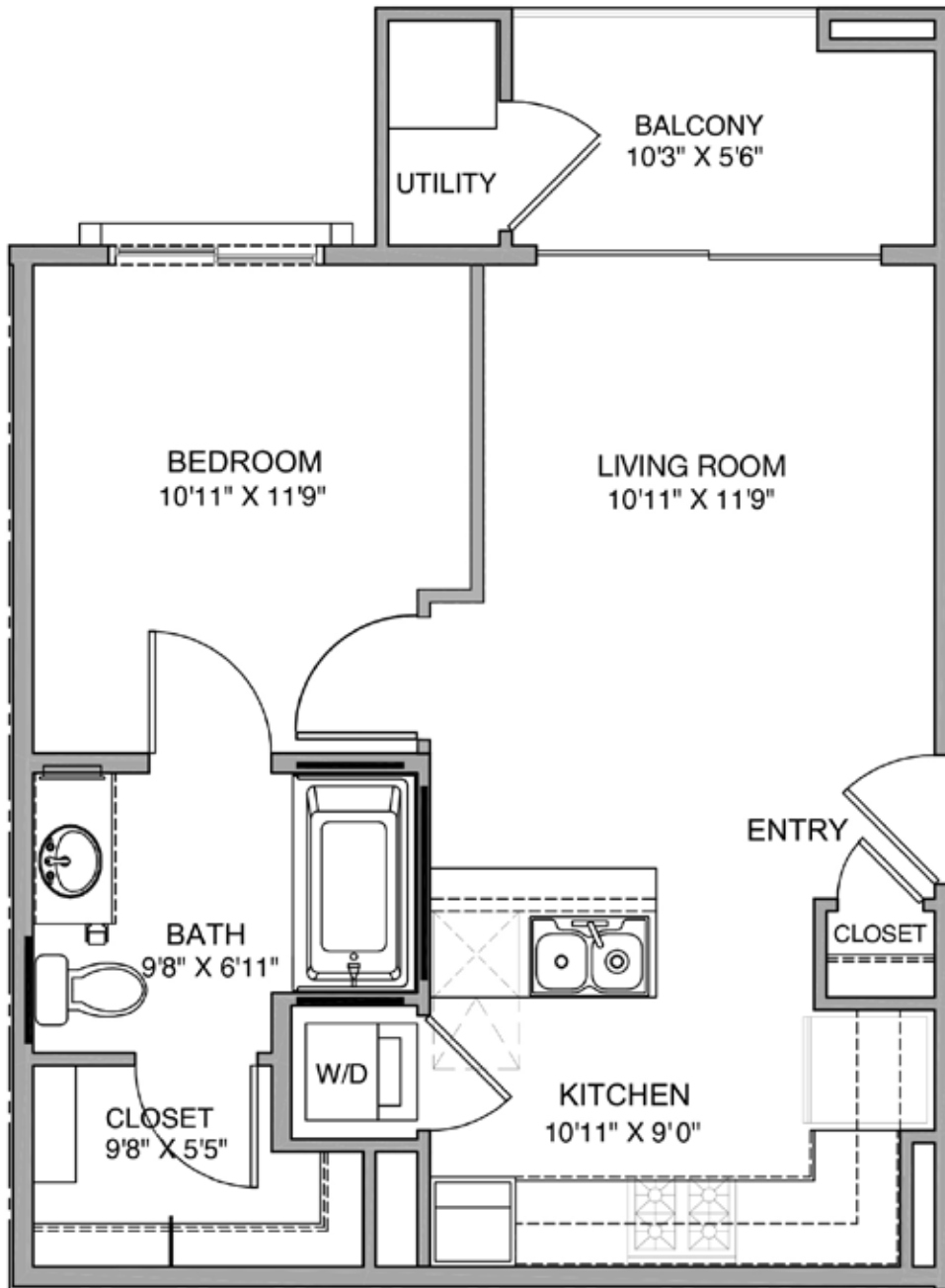




The Billie

Studio
Approximately 625 sq. ft.

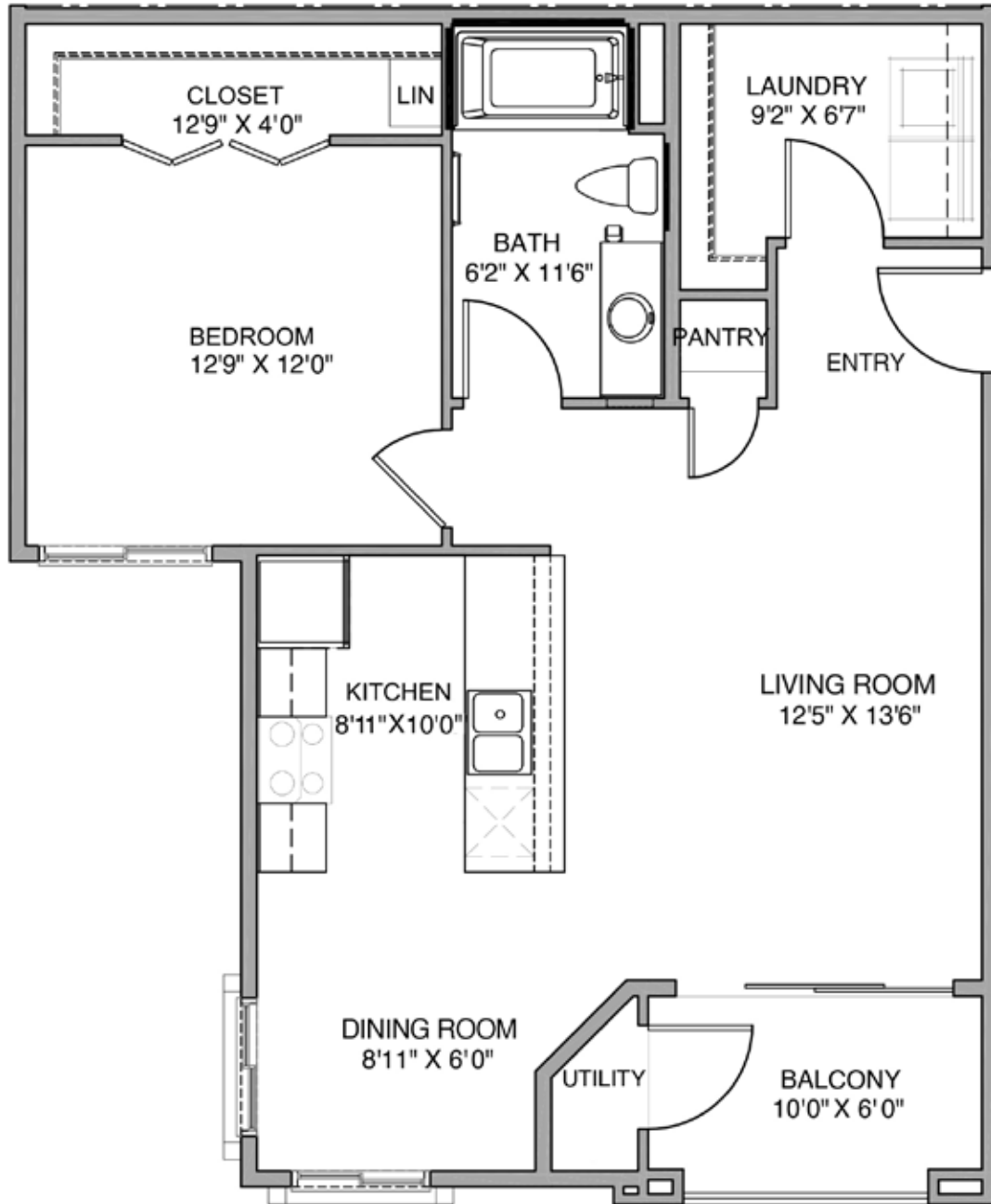
Square footage is approximate and may vary by unit. Availability and pricing subject to change.



The Doll

1 Bedroom / 1 Bathroom
Approximately 605 sq. ft.

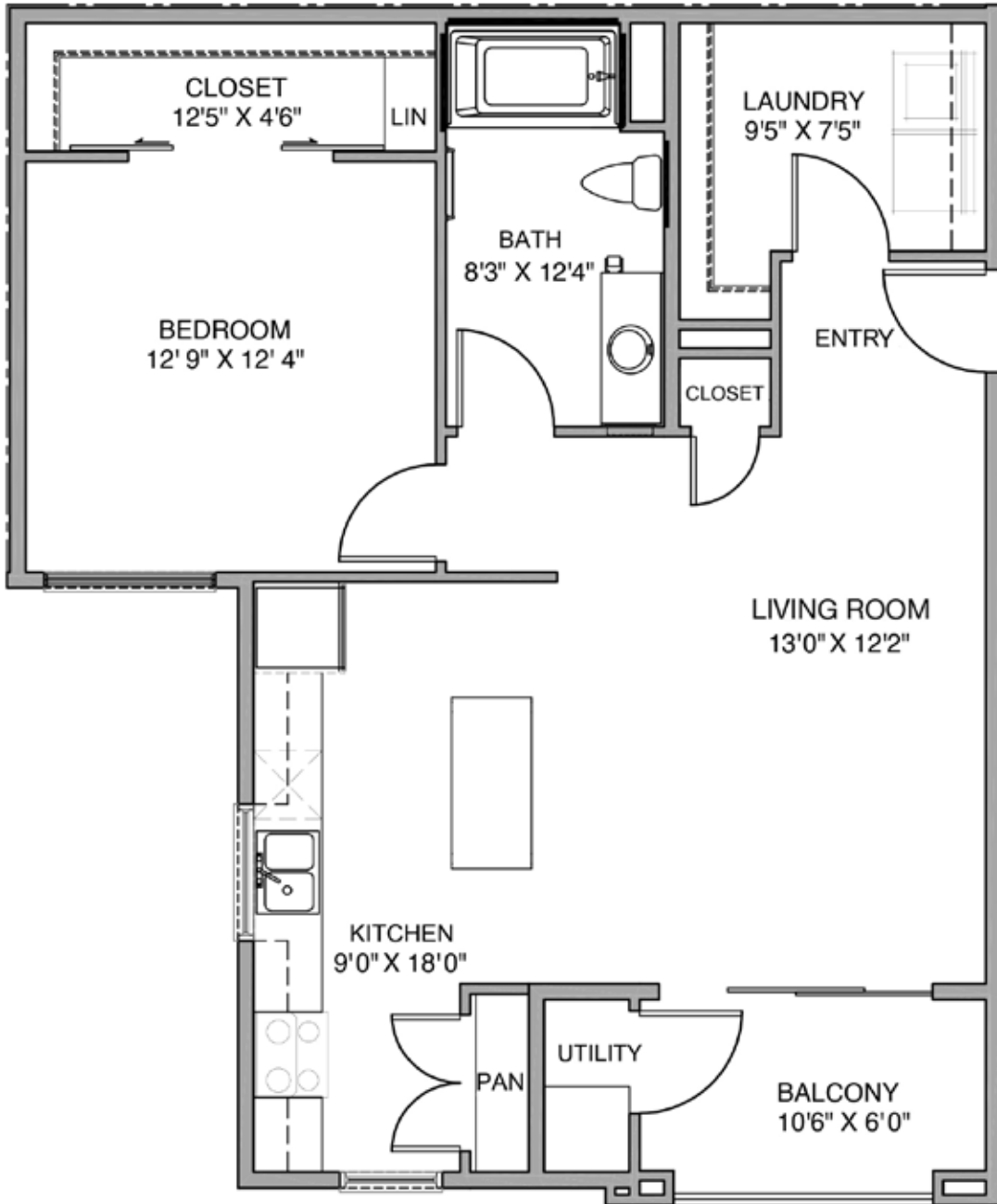
Square footage is approximate and may vary
by unit. Availability and pricing subject to change.



The Bonnie

1 Bedroom / 1 Bathroom
Approximately 863 sq. ft.

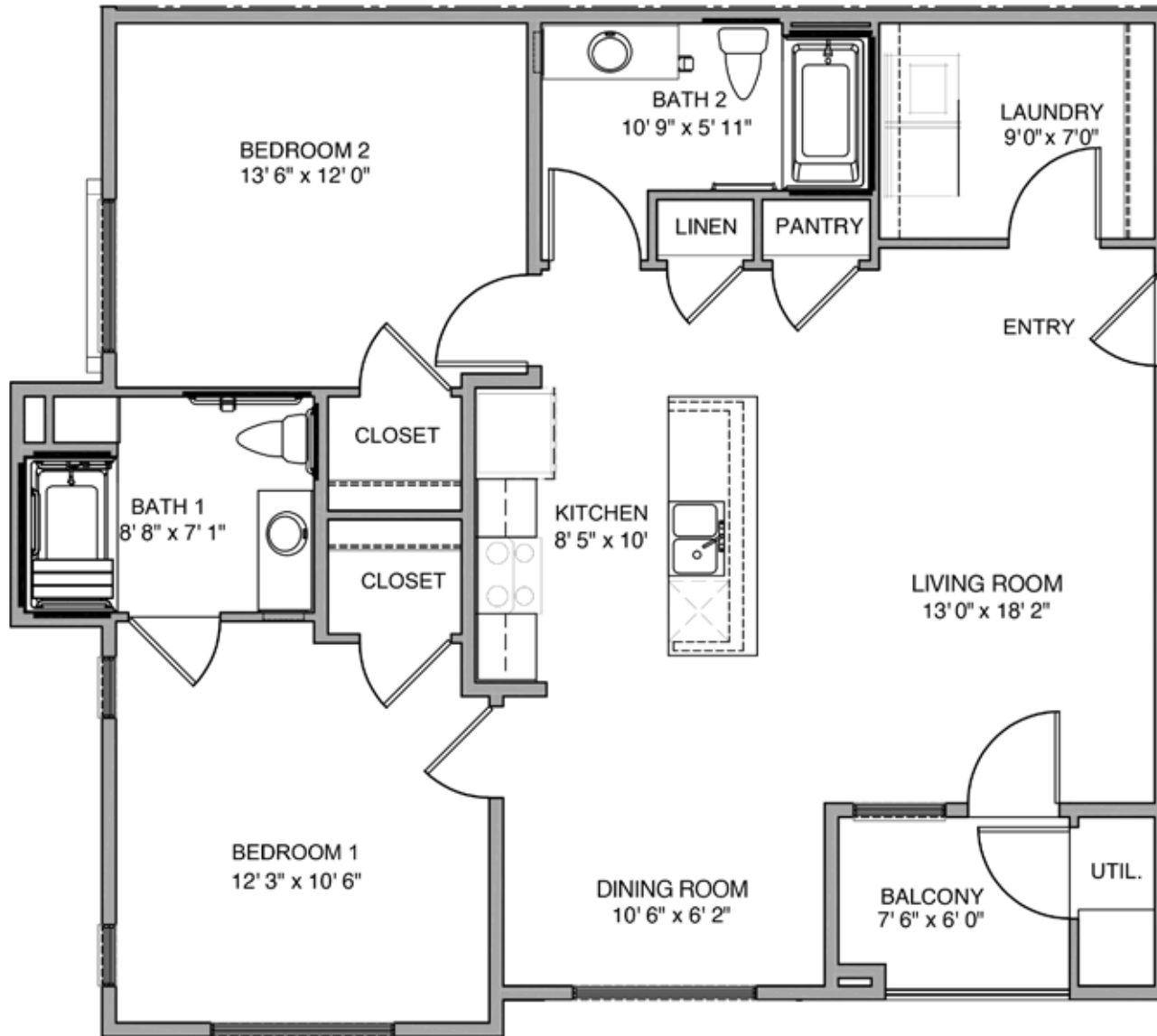
Square footage is approximate and may vary by unit. Availability and pricing subject to change.



The Clyde

1 Bedroom / 1 Bathroom
Approximately 899 sq. ft.

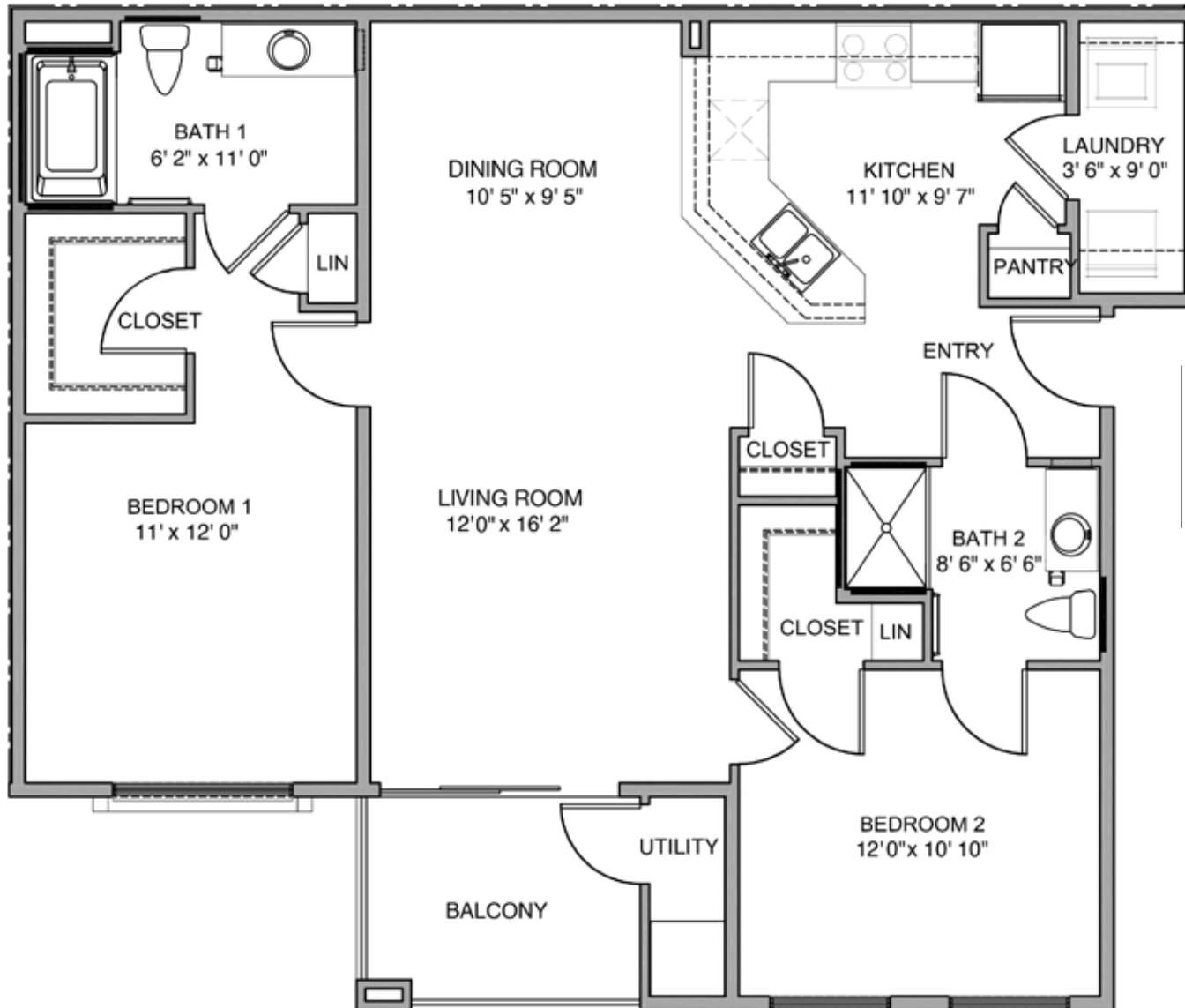
Square footage is approximate and may vary
by unit. Availability and pricing subject to change.



The Gatsby

2 Bedroom / 2 Bathroom
Approximately 1,180 sq. ft.

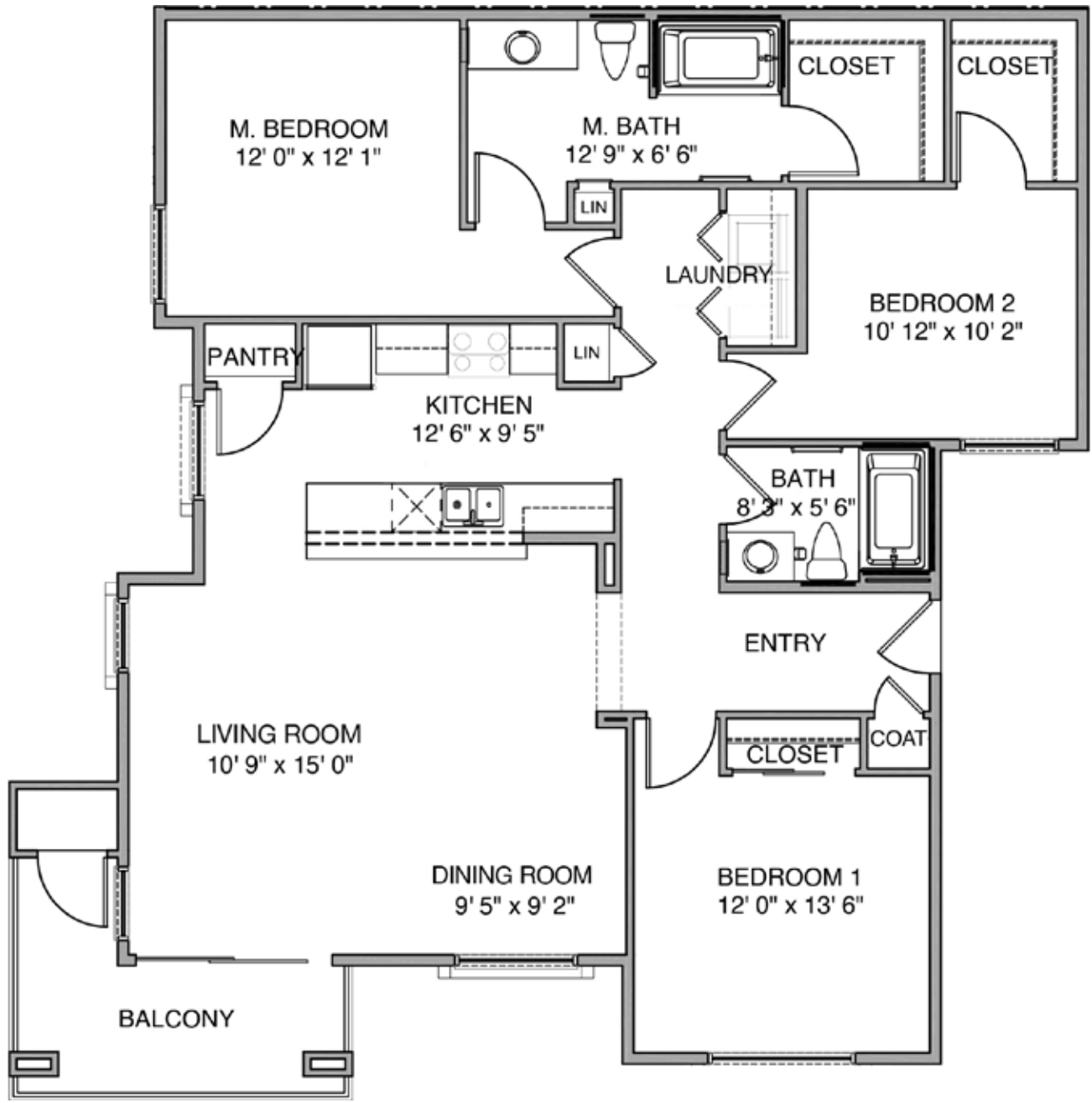
Square footage is approximate and may vary
by unit. Availability and pricing subject to change.



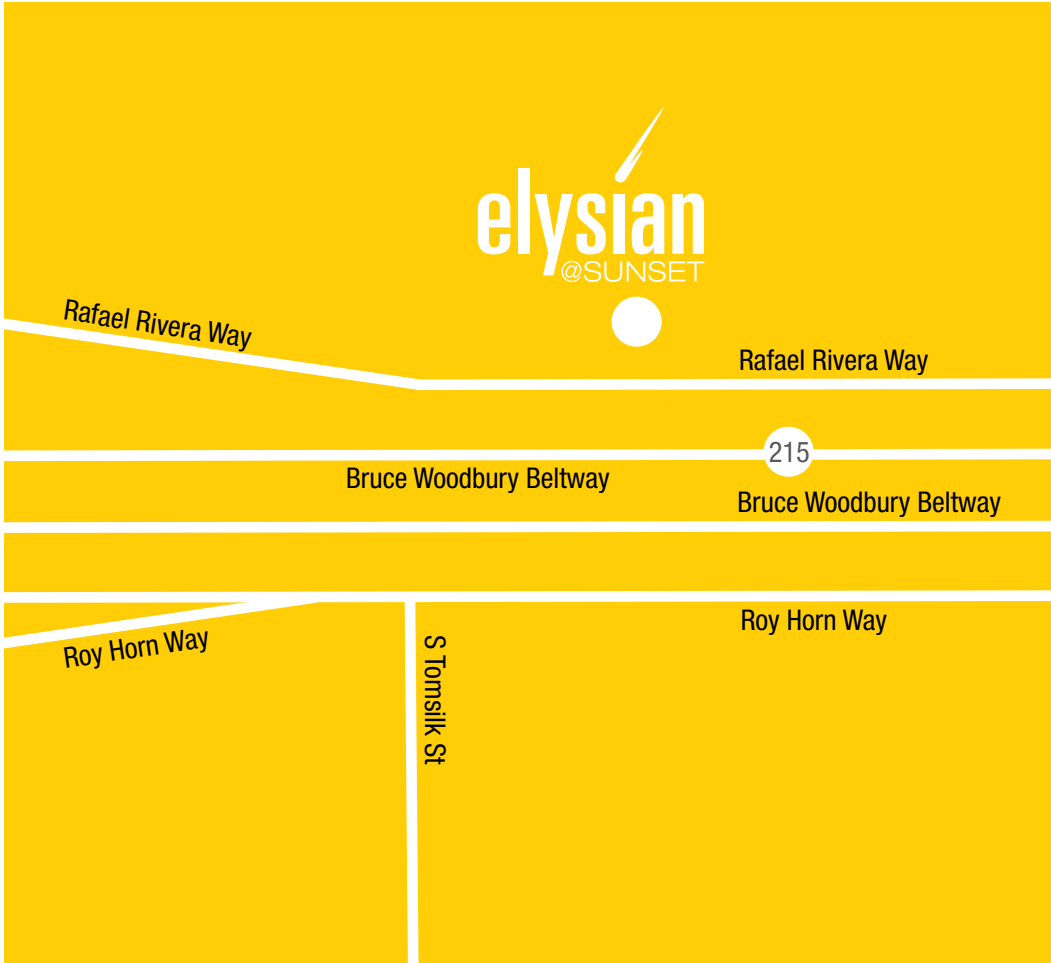
The Deco

2 Bedroom / 2 Bathroom
 Approximately 1,196 sq. ft.

Square footage is approximate and may vary by unit. Availability and pricing subject to change.



The Speakeasy
 3 Bedroom / 2 Bathroom
 Approximately 1,533 sq. ft.
 Square footage is approximate and may vary
 by unit. Availability and pricing subject to change.



8150 Rafael Rivera Way
Las Vegas, NV 89113

Elysianatsunset.com