

FUN REIMAGINED

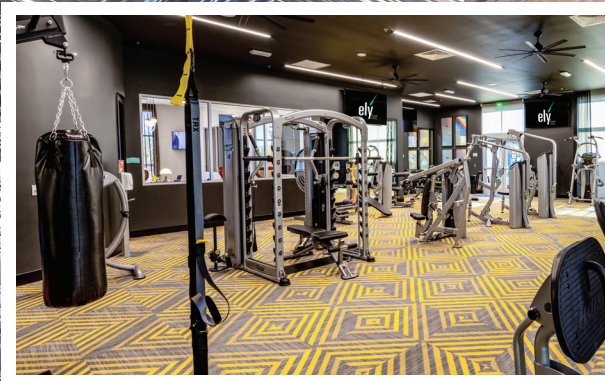


ely
By
Elysian
Living



Thoughtfully situated between the spectacular allure of the Las Vegas Strip and the quiet solitude of Red Rock Canyon, **Ely at Fort Apache** is the newest, most exciting community for luxury living.

Designed by Calida Studios with a fresh and unique vision, this inspired collection of luxury dwellings delivers comfort, style and convenience beyond your wildest expectations. Studio, one, two and three-bedroom residences are well-appointed with high ceilings, designer fixtures, timeless hardware, stainless steel appliances and quartz countertops in all kitchens and bathrooms!



Savor the lush, vibrant gardens as you stroll the meticulous landscaped grounds. Enjoy the serenity of the resort-style pool and spa. Test your limits with full cardio and strength training in the state-of-the-art fitness center. Strike up some friendly competition in the game room and then cap the day basking in the warmth of the outdoor fire pits.



Attuned to your every need, Ely at Fort Apache was created to surround you with a world of conveniences. Just minutes away, you'll find the best in dining, shopping, entertainment, golf, parks and easy access to I-215.



CONTEMPORARY

COMMUNITY FEATURES

- Designed by Calida Studios
- Highly social lifestyle
- Lushly landscaped resort-style pool, spa and recreational decks
- Private poolside cabanas
- Outdoor kitchen with BBQ grills, kegerator, under counter refrigerator and bar seating
- Seating area with 75" TVs
- Intimate seating areas with fire pits
- Picnic and BBQ areas
- Dog park
- Outdoor ping pong table
- Resident lobby
- Concierge services to cater to personalized resident needs
- 5,900 square foot standalone clubhouse featuring:
 - Hospitality bar with Wi-Fi
 - Game room
 - Wi-Fi lounge
 - Full cardio and strength training facility
- Walking distance to a variety of nearby restaurants and retail
- Convenient access to I-215
- Pet friendly dogs of all sizes*

RESIDENCE AMENITIES

- Minimum 9-foot ceilings in all units
- Contemporary designer fixtures and hardware including upgraded cabinetry and quartz countertops in all kitchens and bathrooms
- Stainless steel appliances, including microwave, dishwasher, range and refrigerator / freezer
- 4 in. quartz backsplash in kitchen
- Kitchen cabinets featuring full height drawers
- Pantry closets
- Under mount sinks in bathrooms and drop-in sinks in kitchens
- Spacious balconies offering pool and courtyard views
- Over-sized tub in all units
- Full size showers in select units
- State-of-the-art LED lighting
- Wood inspired, luxury vinyl plank flooring in the kitchen, bathroom and living areas
- Plush wall-to-wall carpeting in bedrooms and bedroom closets
- Custom designed walk-in closets in all units (excluding the S1 floor plan)
- Coat closets in all units (excluding the S2 floor plan)
- Electric water heaters
- Pre-wired for telephone, cable TV, high-speed internet access and ceiling fans
- Discounted cable and high-speed internet service through Cox partnership
- Stacked in-unit washer / dryers
- Individual climate control
- Sprinkler system for fire safety
- Storage space available

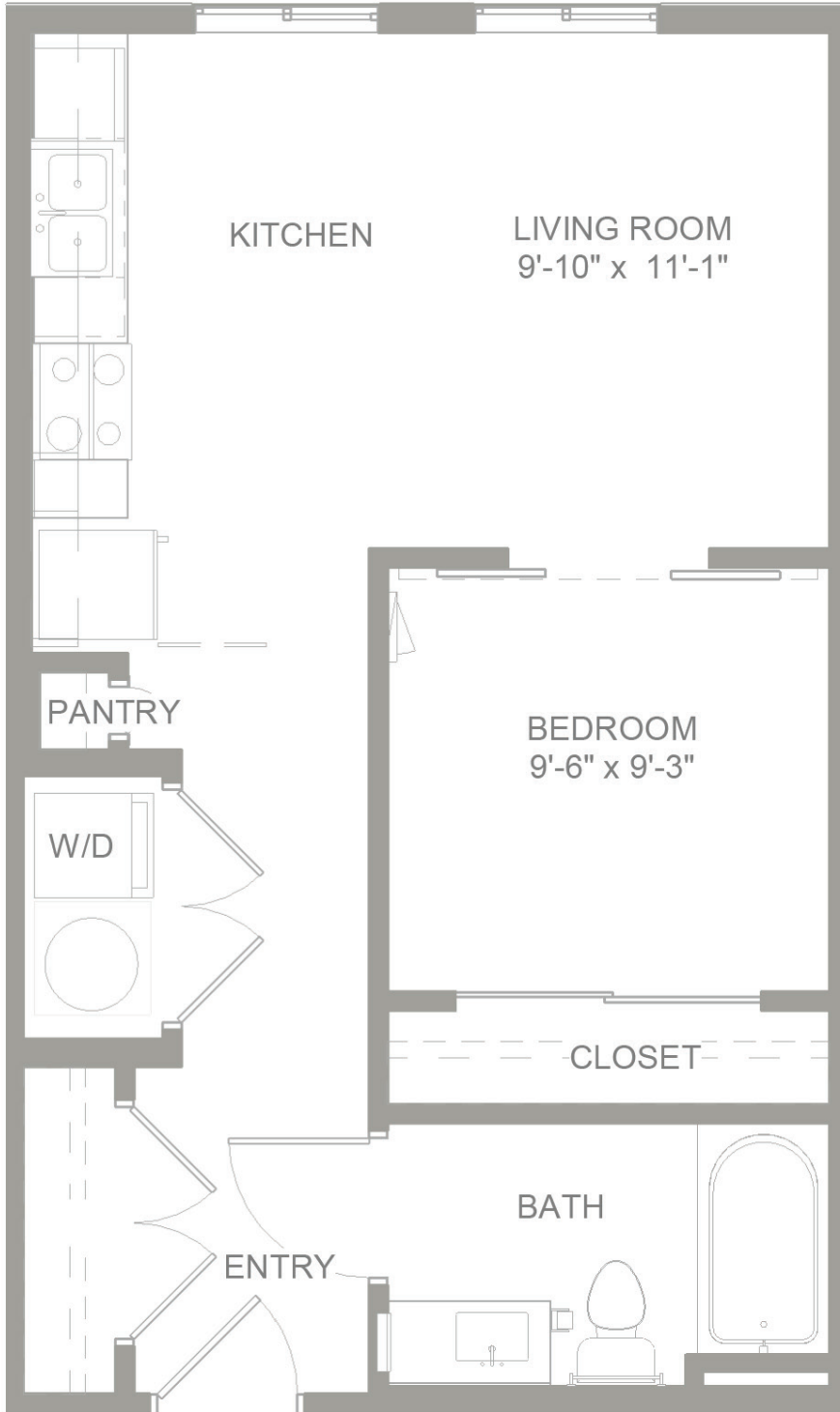
* Some breed restrictions may apply. Contact leasing team for details.

S1

1 Bedroom / 1 Bathroom

Approximately 544 sq. ft.

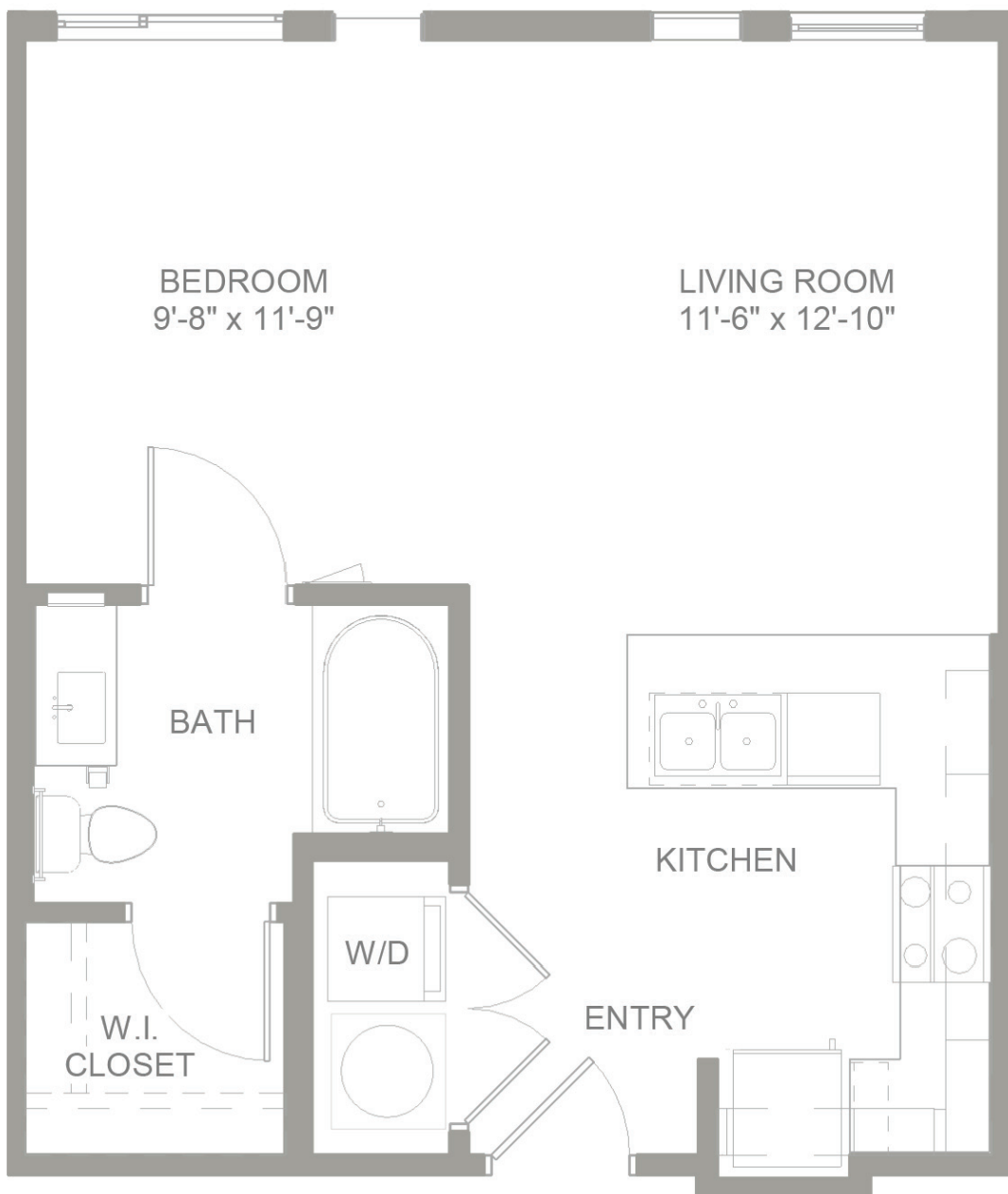
Square footage is approximate and may vary by unit.
Availability and pricing subject to change.



S2 Studio

Approximately 545 sq. ft.

Square footage is approximate and may vary by unit.
Availability and pricing subject to change.

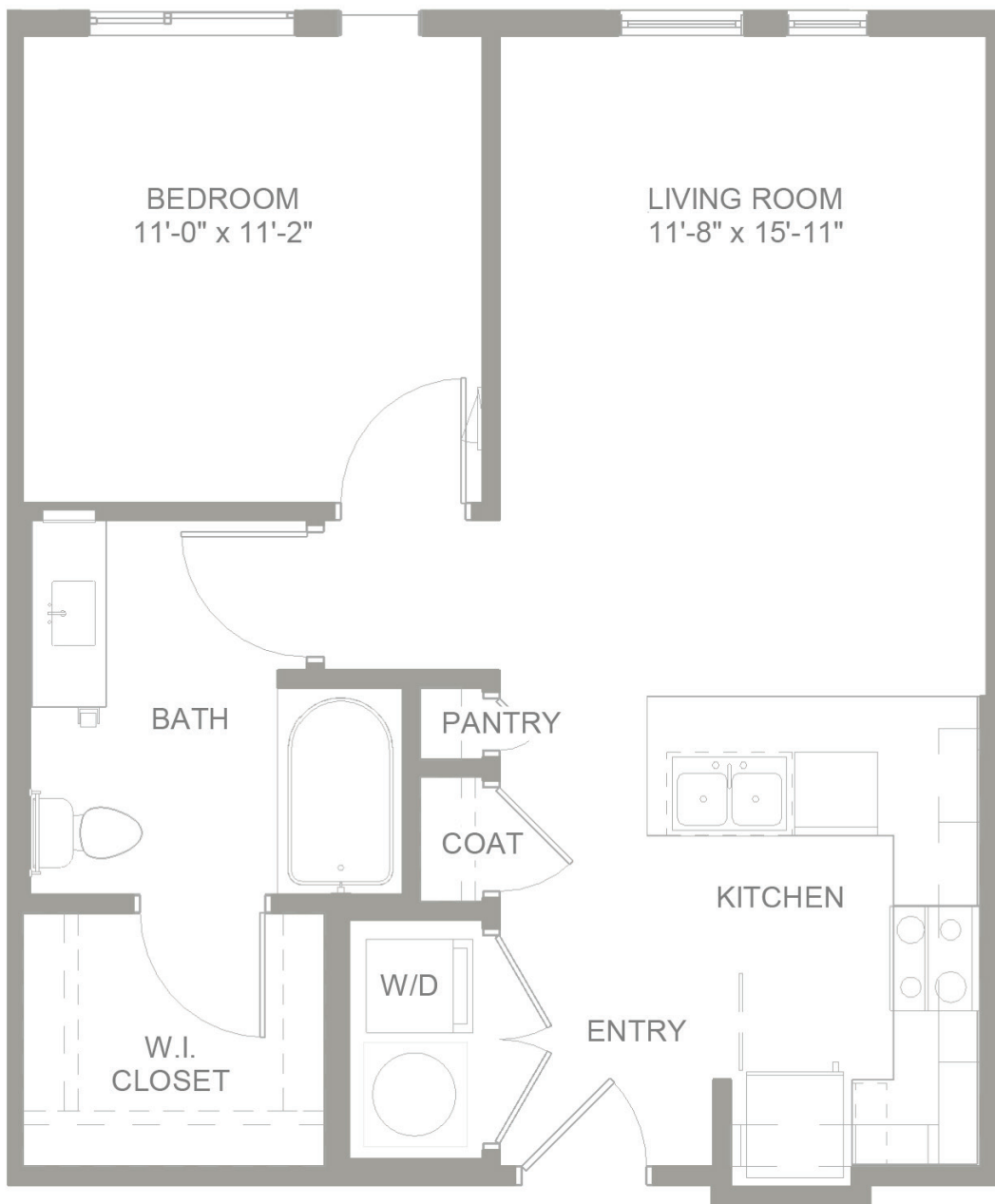


A1

1 Bedroom / 1 Bathroom

Approximately 671 sq. ft.

Square footage is approximate and may vary by unit.
Availability and pricing subject to change.

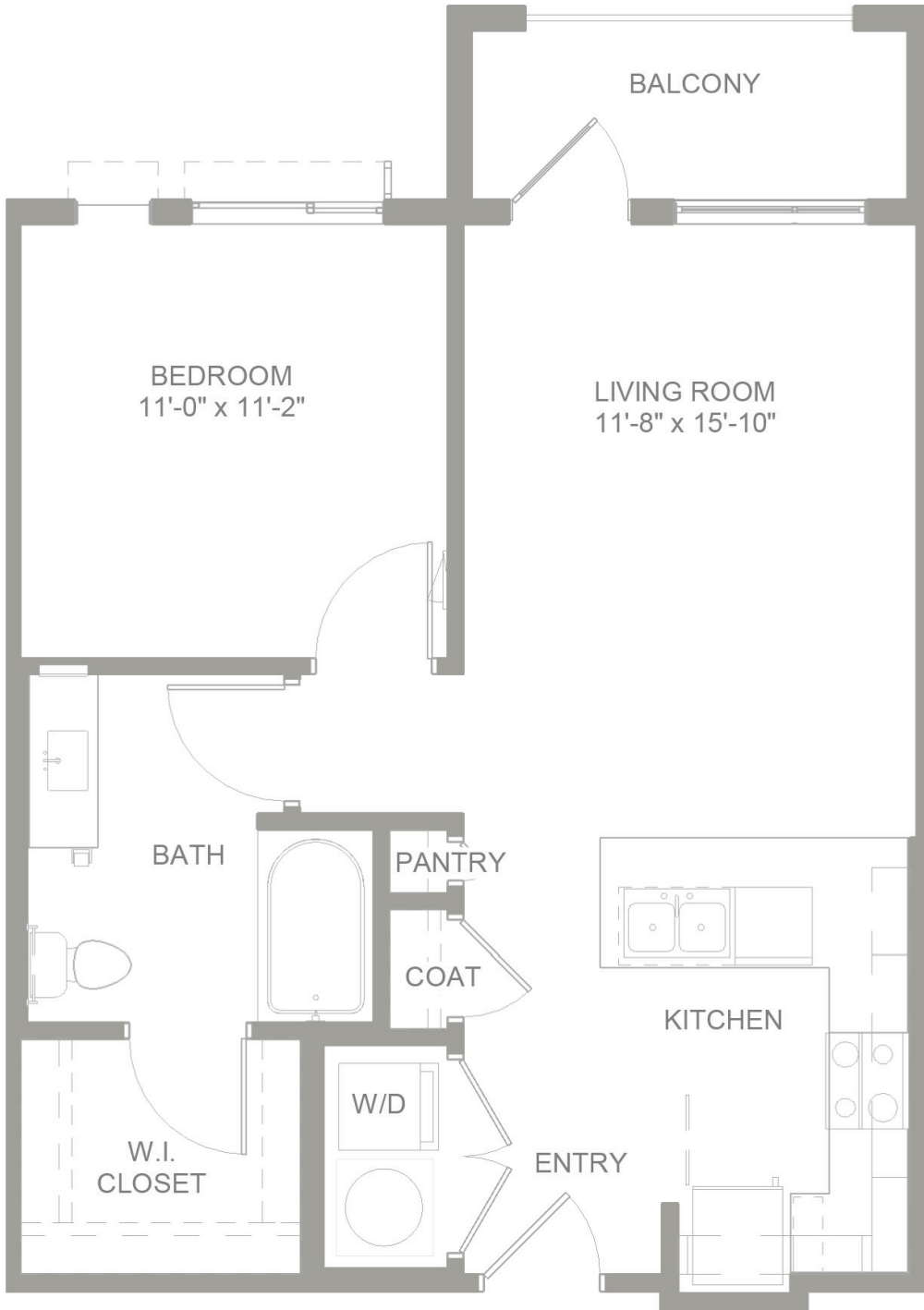


A1A

1 Bedroom / 1 Bathroom

Approximately 733 sq. ft.

Square footage is approximate and may vary by unit.
Availability and pricing subject to change.

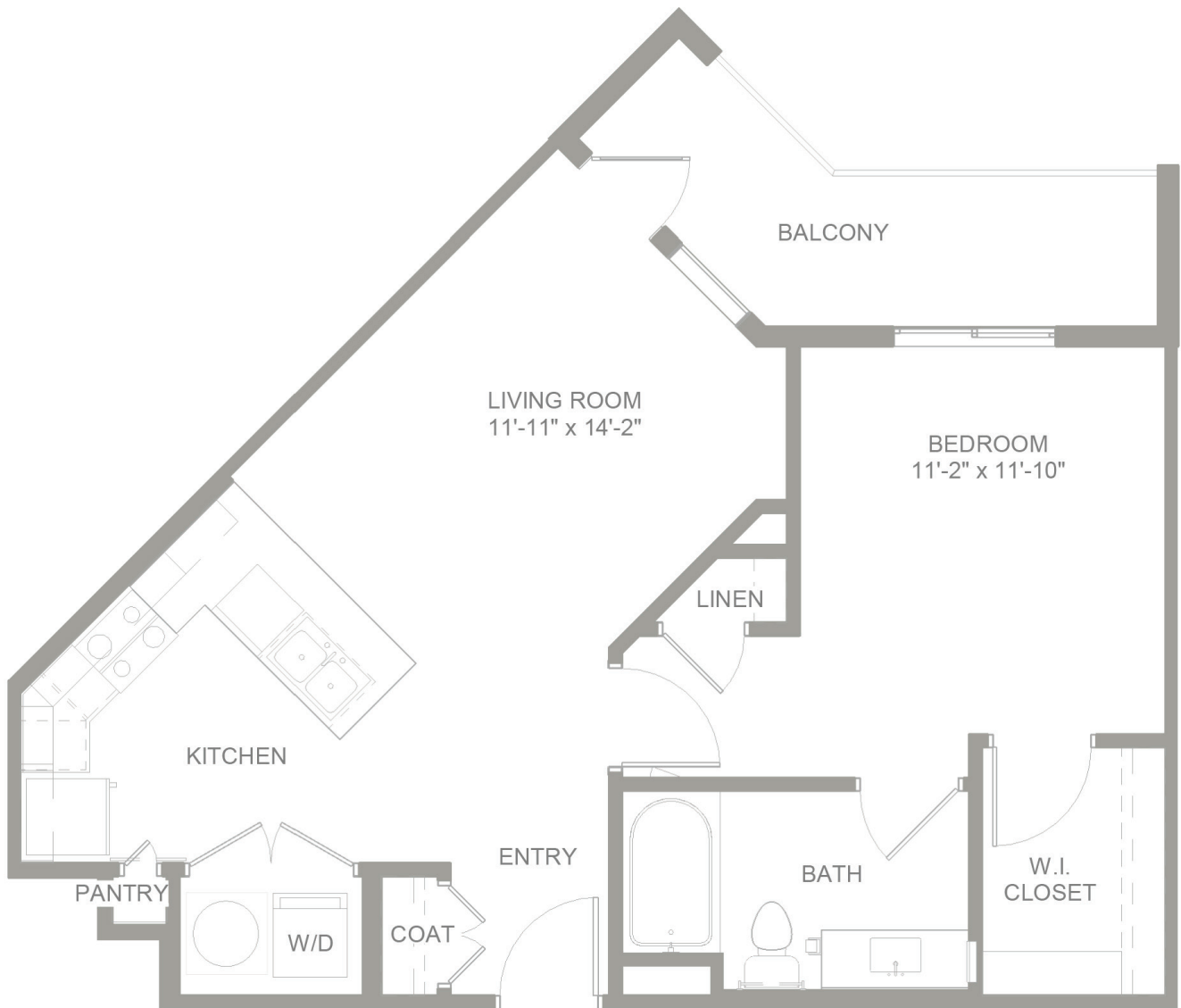


A2

1 Bedroom / 1 Bathroom

Approximately 797 sq. ft.

Square footage is approximate and may vary by unit.
Availability and pricing subject to change.

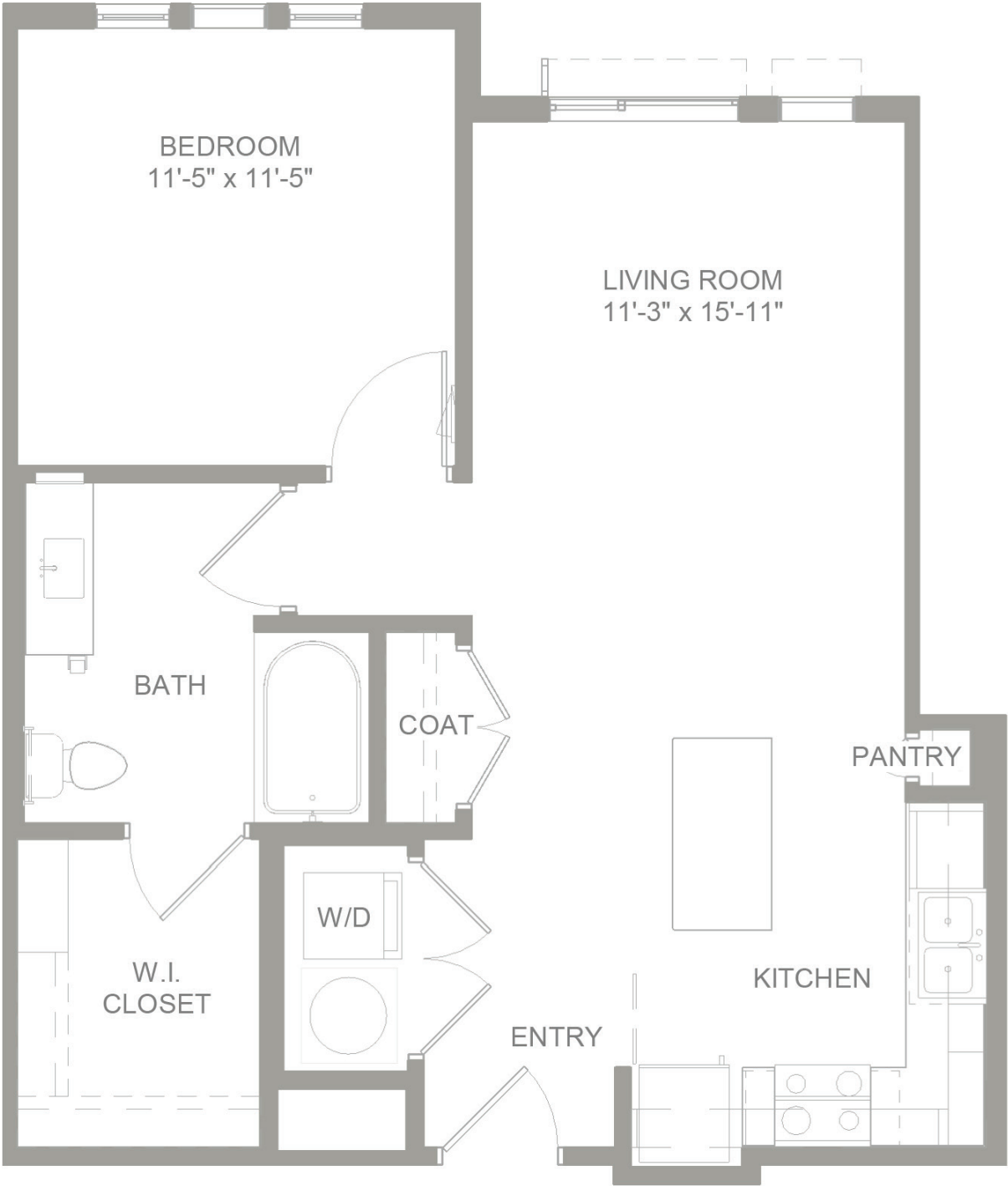


A4

1 Bedroom / 1 Bathroom

Approximately 710 sq. ft.

Square footage is approximate and may vary by unit.
Availability and pricing subject to change.

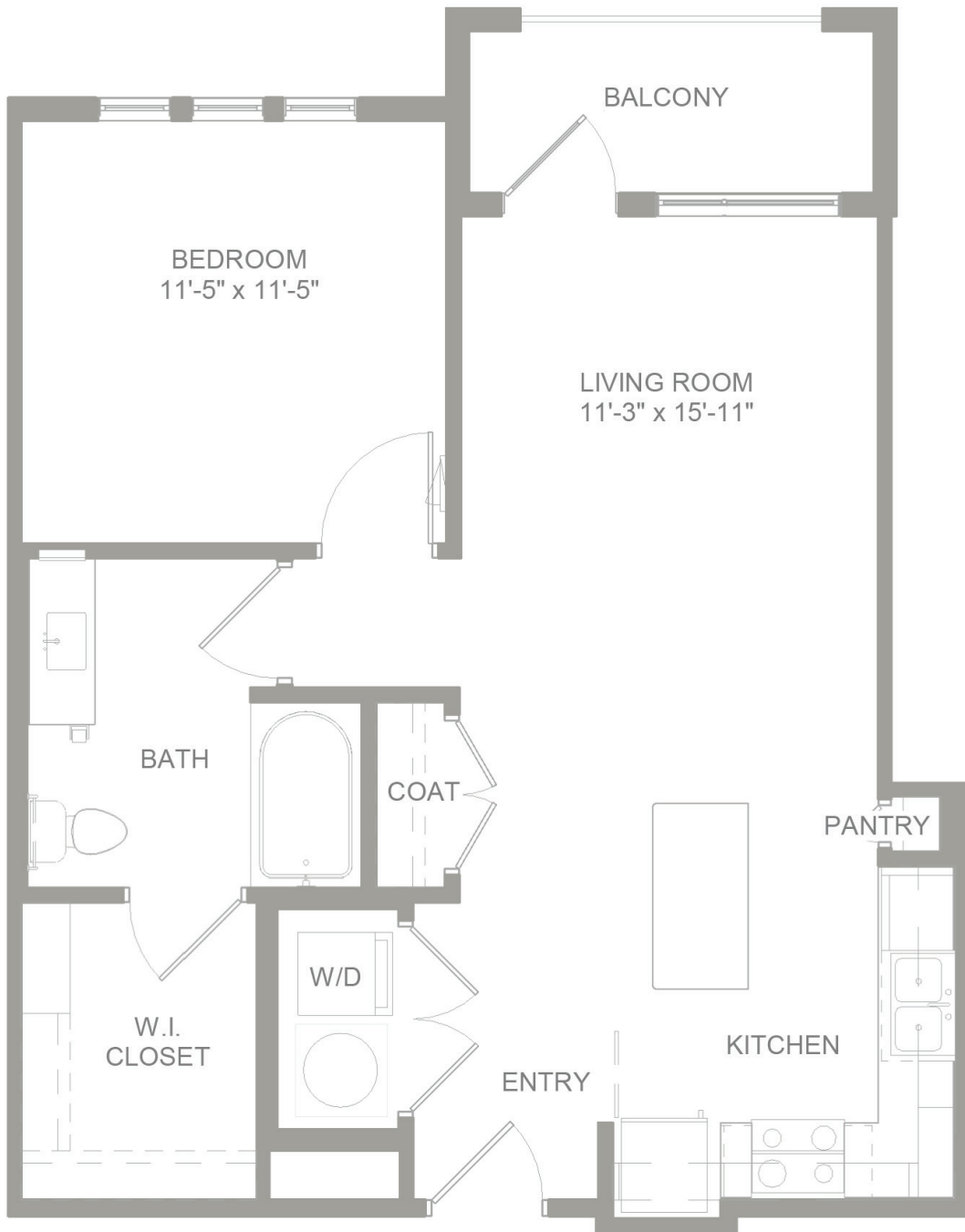


A4A

1 Bedroom / 1 Bathroom

Approximately 768 sq. ft.

Square footage is approximate and may vary by unit.
Availability and pricing subject to change.

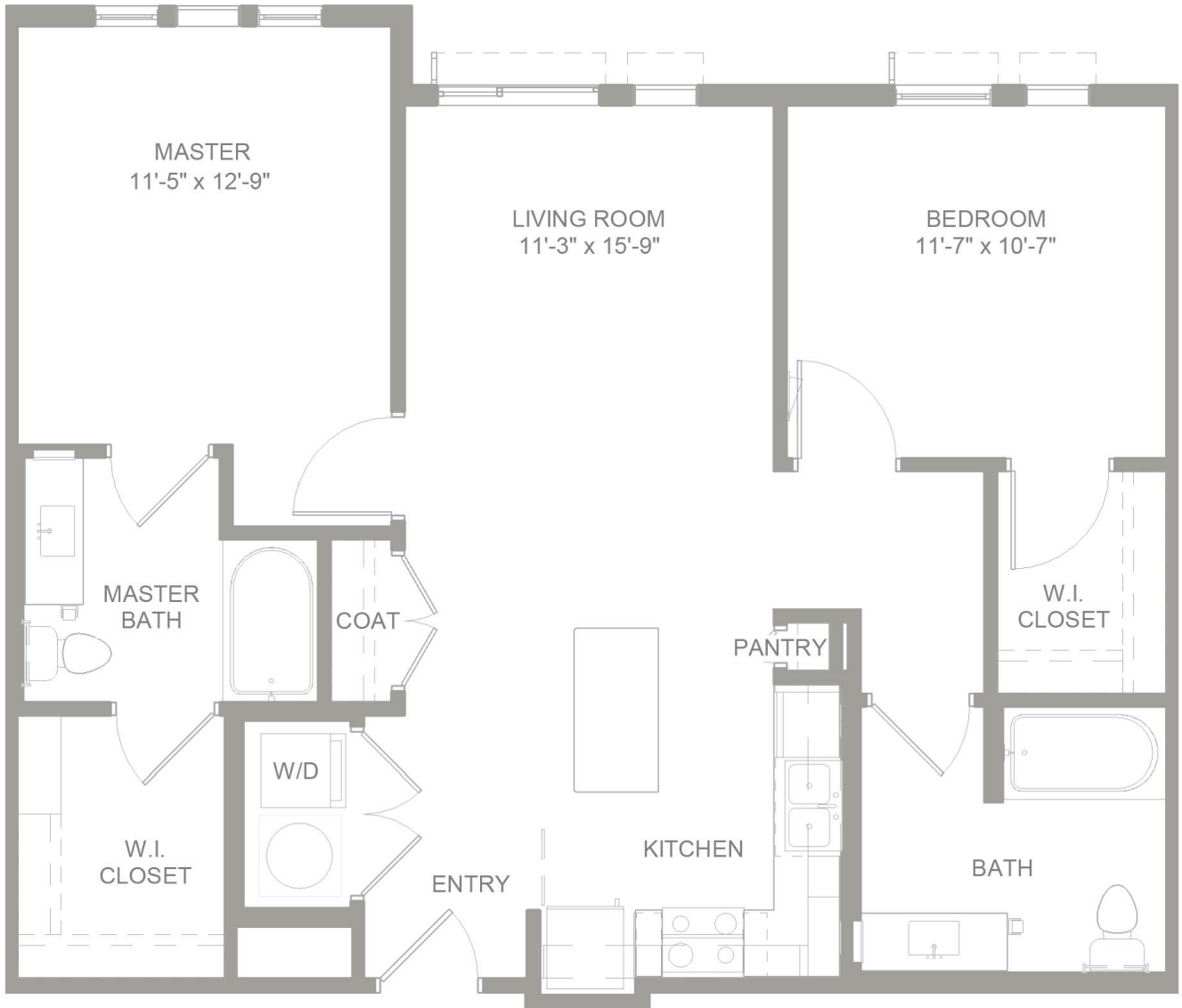


B1

2 Bedroom / 2 Bathroom

Approximately 1,015 sq. ft.

Square footage is approximate and may vary by unit.
Availability and pricing subject to change.

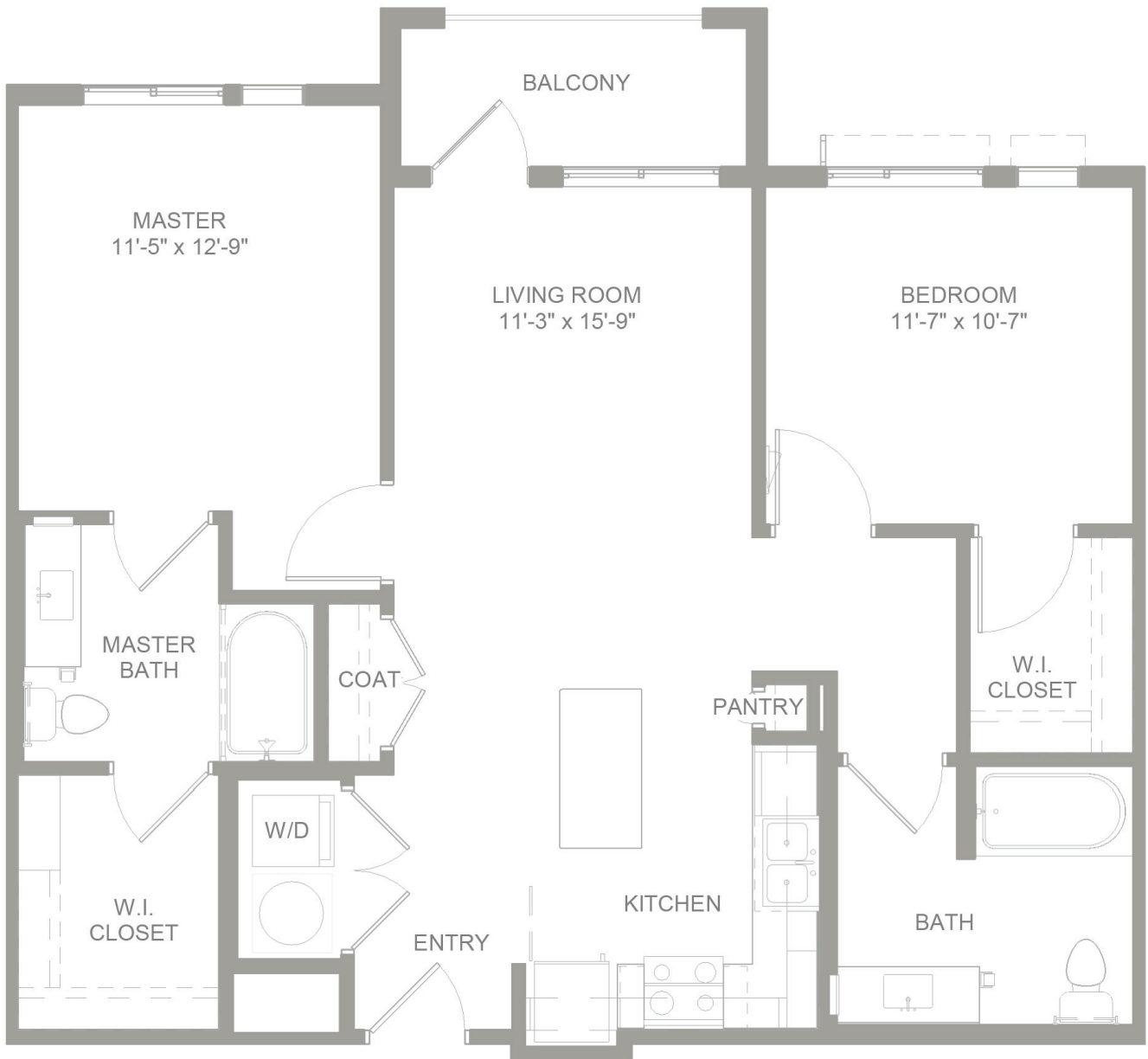


B1A

2 Bedroom / 2 Bathroom

Approximately 1,069 sq. ft.

Square footage is approximate and may vary by unit.
Availability and pricing subject to change.

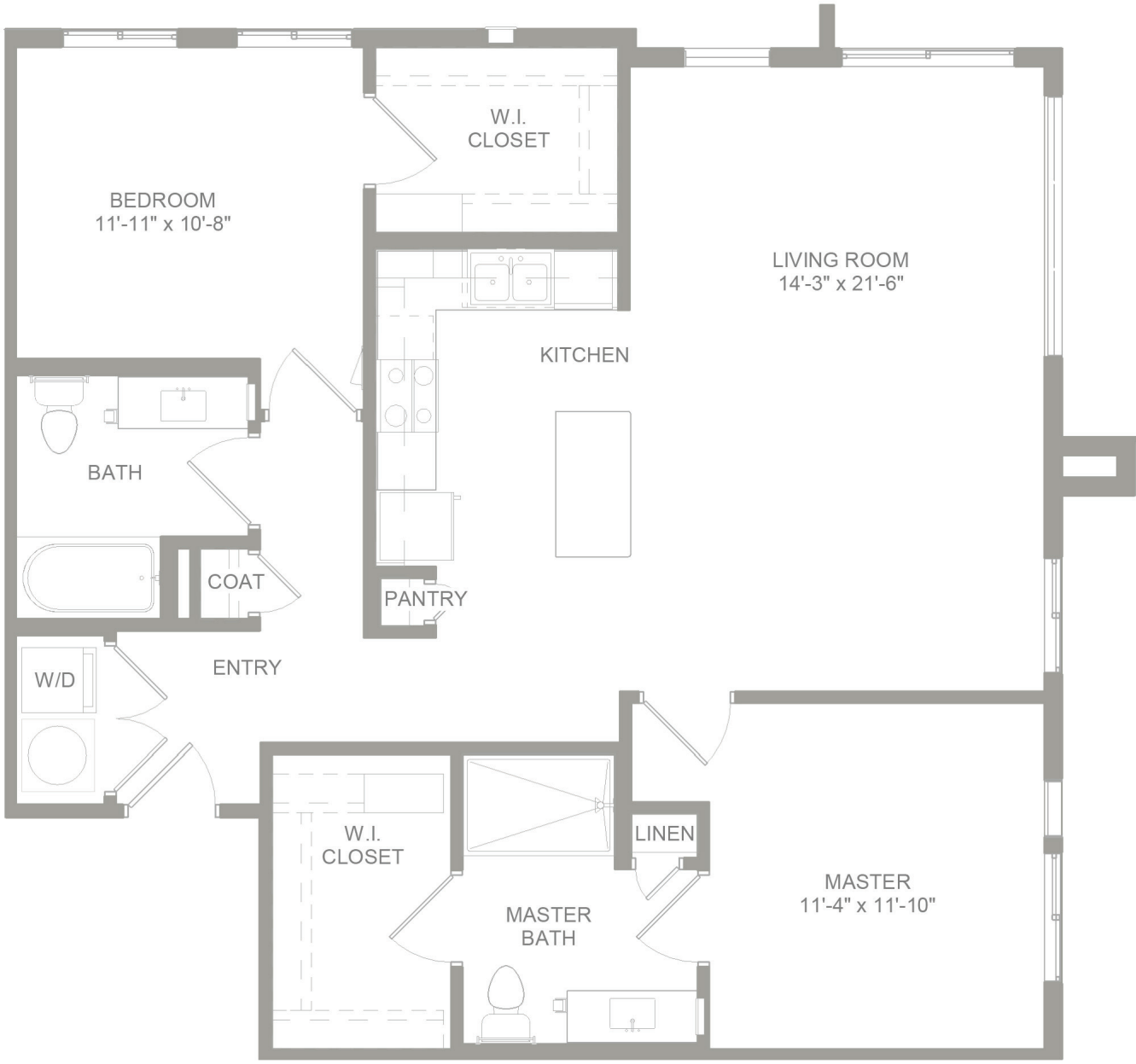


B2

2 Bedroom / 2 Bathroom

Approximately 1,199 sq. ft.

Square footage is approximate and may vary by unit.
Availability and pricing subject to change.

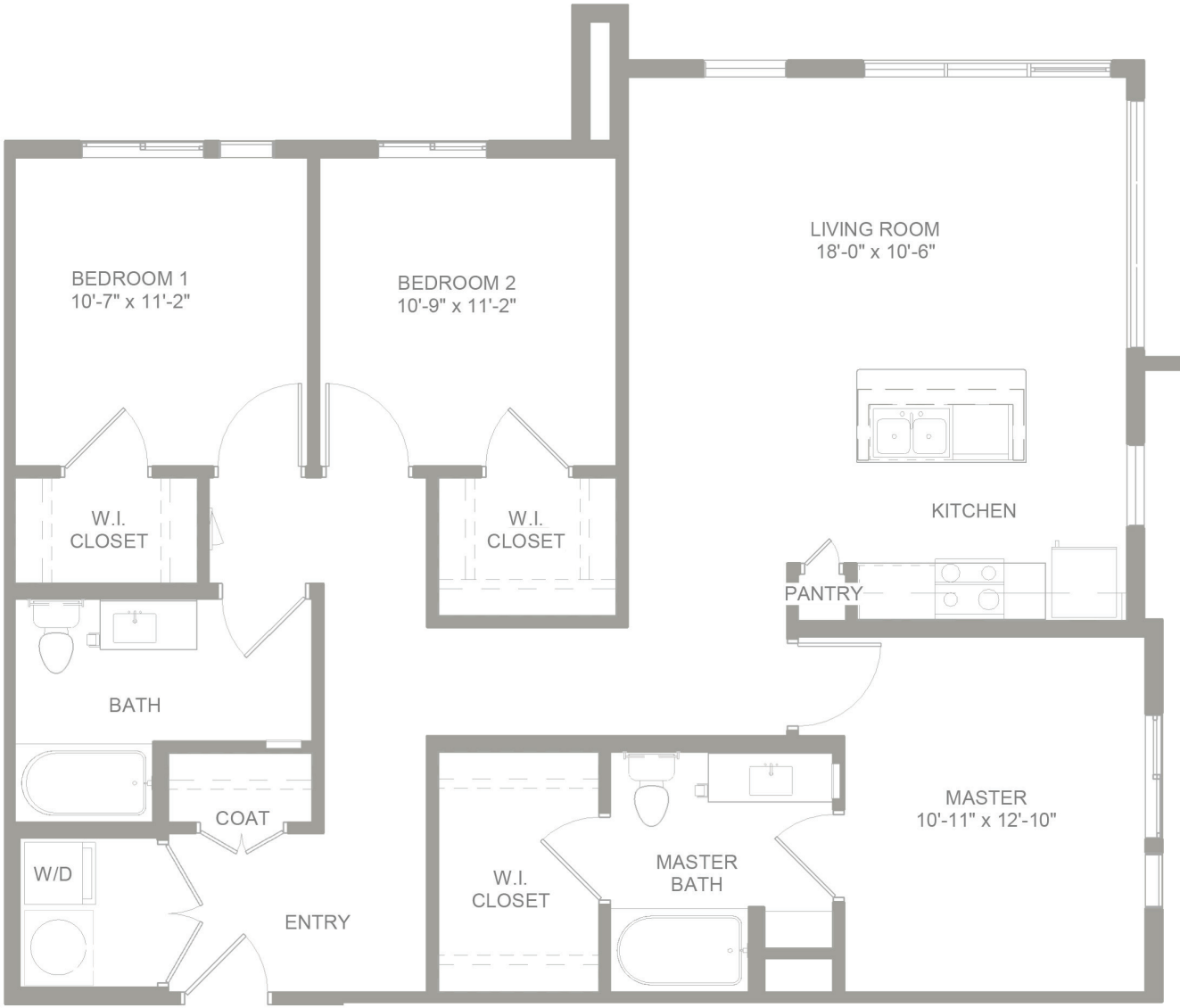


C1

3 Bedroom / 2 Bathroom

Approximately 1,341 sq. ft.

Square footage is approximate and may vary by unit.
Availability and pricing subject to change.

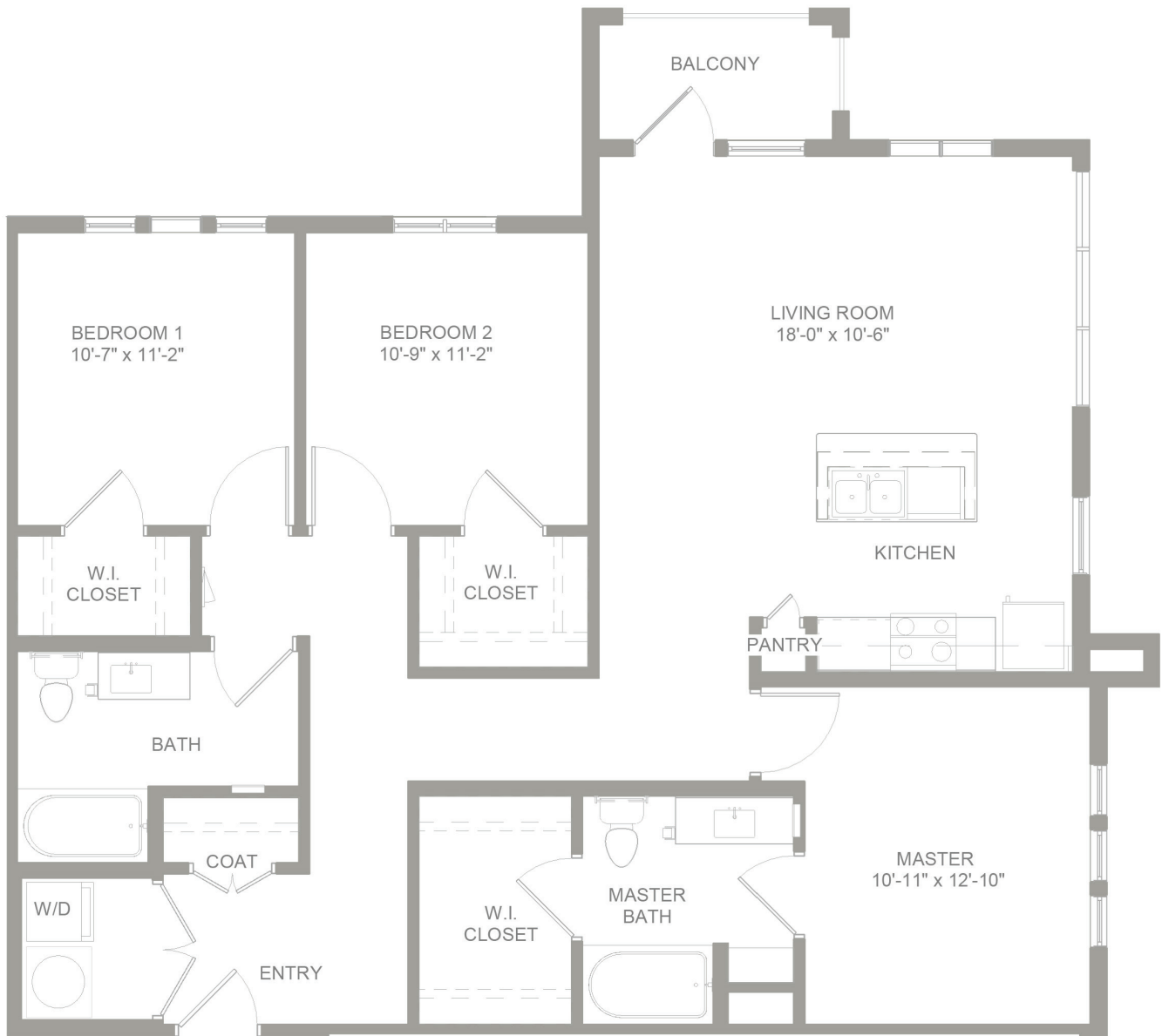


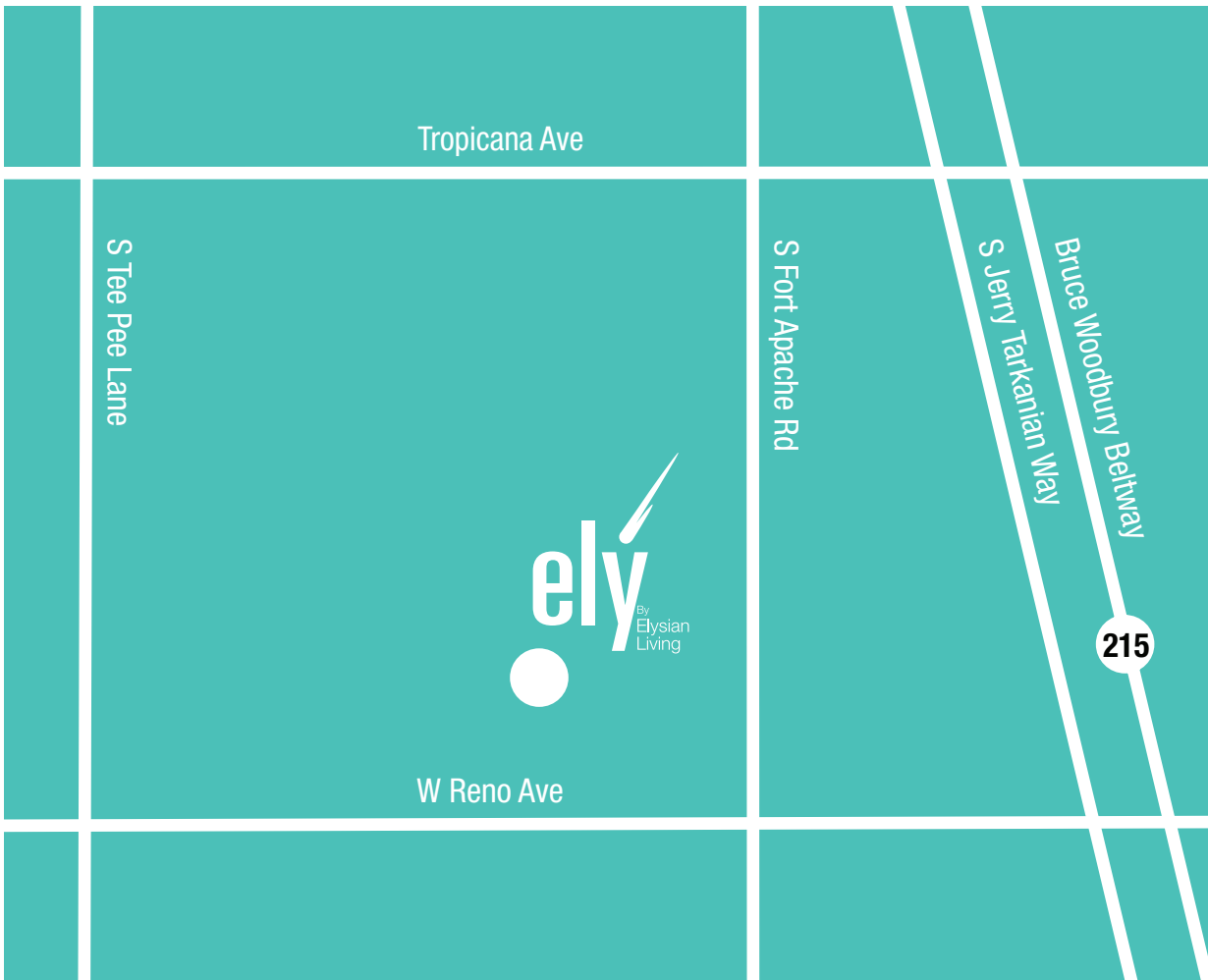
C1A

3 Bedroom / 2 Bathroom

Approximately 1,389 sq. ft.

Square footage is approximate and may vary by unit.
Availability and pricing subject to change.





5055 S. Fort Apache Rd.
Las Vegas, NV 89148

Elyatfortapache.com

