

elysian
@POST

LUXURY
REDEFINED





COMING SOON TO A NEW PROPERTY

For those who appreciate the finer things in life, we present **Elysian at Post**.

Stylish, sophisticated and sassy, Elysian at Post offers the best of both worlds with its proximity to picturesque Red Rock Canyon and the dazzling allure of the Las Vegas Strip.

Designed by Calida Studios with a fresh and unique vision, this inspired collection of studio, one, two and three-bedroom residences features a variety of luxurious amenities that satisfy the most discerning tastes. Each unit is appointed with ultra-modern designer fixtures, timeless hardware, stainless steel appliances, quartz countertops and spacious balconies!

All brochure photography is from Elysian at Sunset. Elysian at Post images coming soon once construction has been completed.



Focused on a highly social lifestyle with an enviable selection of on and offsite events, Elysian Living members enjoy a concierge level of service and exclusive perks!

Exhale and unwind at the resort-style pool and spa with private cabanas. Pump up and slim down in the state-of-the-art fitness center replete with a variety of weights and cardio machines. Book a well-deserved massage in our private massage room. Mingle with neighbors at the outdoor kitchen with BBQ grills or strike up some friendly competition in the game lounge.

All brochure photography is from Elysian at Sunset. Elysian at Post images coming soon once construction has been completed.

Elysian at Post was thoughtfully conceived with every convenience in mind. With easy access to the Bruce Woodbury Beltway, you're just minutes from the best dining, shopping, entertainment, nature trails and parks Las Vegas has to offer!

THE HOME YOU'VE IMAGINED. THE LIFESTYLE YOU DESERVE.

Community Features

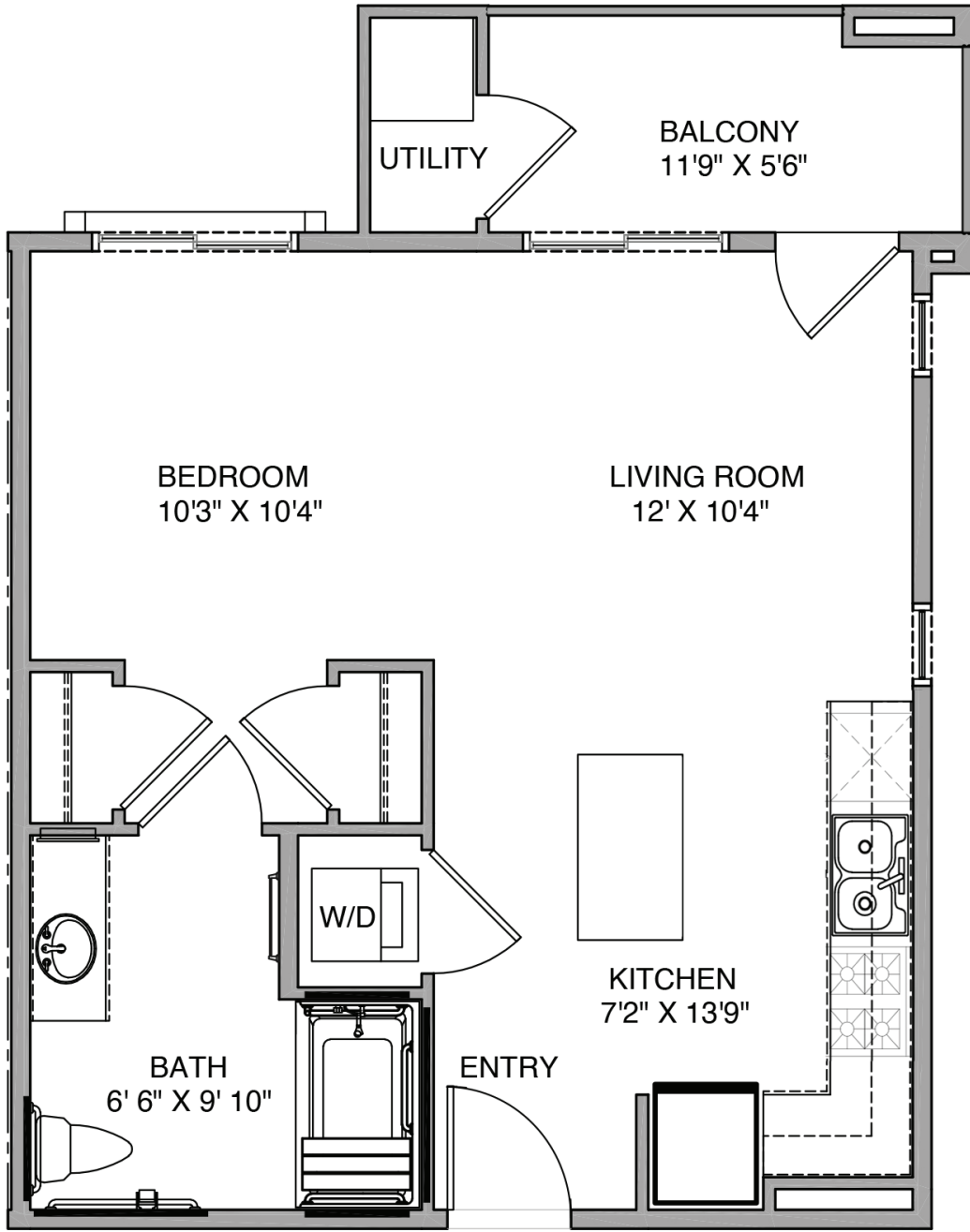
- Designed by Calida Studios
- Highly social lifestyle
- Lushly landscaped resort-style pool, spa, and recreation decks
- Private poolside cabanas
- Outdoor kitchen with BBQ grills, kegerator, under counter refrigerator, bar seating
- Separate garages available
- Seating areas with 75" TVs
- Intimate seating areas with fire pits
- Outdoor volleyball court
- Outdoor basketball court
- Picnic and BBQ areas
- Dog area
- Smoke free
- Clubhouse featuring:
 - Wi-Fi lounge
 - Game lounge with arcade machines
 - Billiards and shuffleboard
 - Hospitality / coffee lounge
 - Workspace / business center
 - Resident lobby
 - Full cardio and strength training facility
 - Massage room
 - Tanning room
- Pet friendly dogs of all sizes*

Residence Amenities

- Minimum 9-foot ceilings in all units
- Contemporary designer fixtures and hardware including upgraded cabinetry and quartz countertops in all kitchens and bathrooms
- Stainless steel appliances, including microwave, dishwasher, range and refrigerator / freezer
- Full height backsplash in kitchen
- Kitchen cabinets featuring extra-large pot drawers and pull out trash drawers
- Pantry closets
- Under mount sinks in kitchen and bathrooms
- Spacious balconies offering pool and courtyard views
- Over-sized tub in all units
- Glass showers in select units
- Full size showers in select units
- State-of-the-art LED lighting
- Wood inspired, luxury vinyl plank flooring in the kitchen, bathroom and living areas
- Plush wall-to-wall carpeting in bedrooms and bedroom closets
- Custom designed walk-in closets in all units
- Coat closets in all units
- Pre-wired for telephone, cable TV, high-speed internet access and ceiling fans
- Discounted cable and high-speed internet service through Cox partnership
- Stacked in-unit washer / dryers
- Individual climate control
- Sprinkler system for fire safety
- Storage spaces available

* Some breed restrictions may apply. Contact leasing team for details.

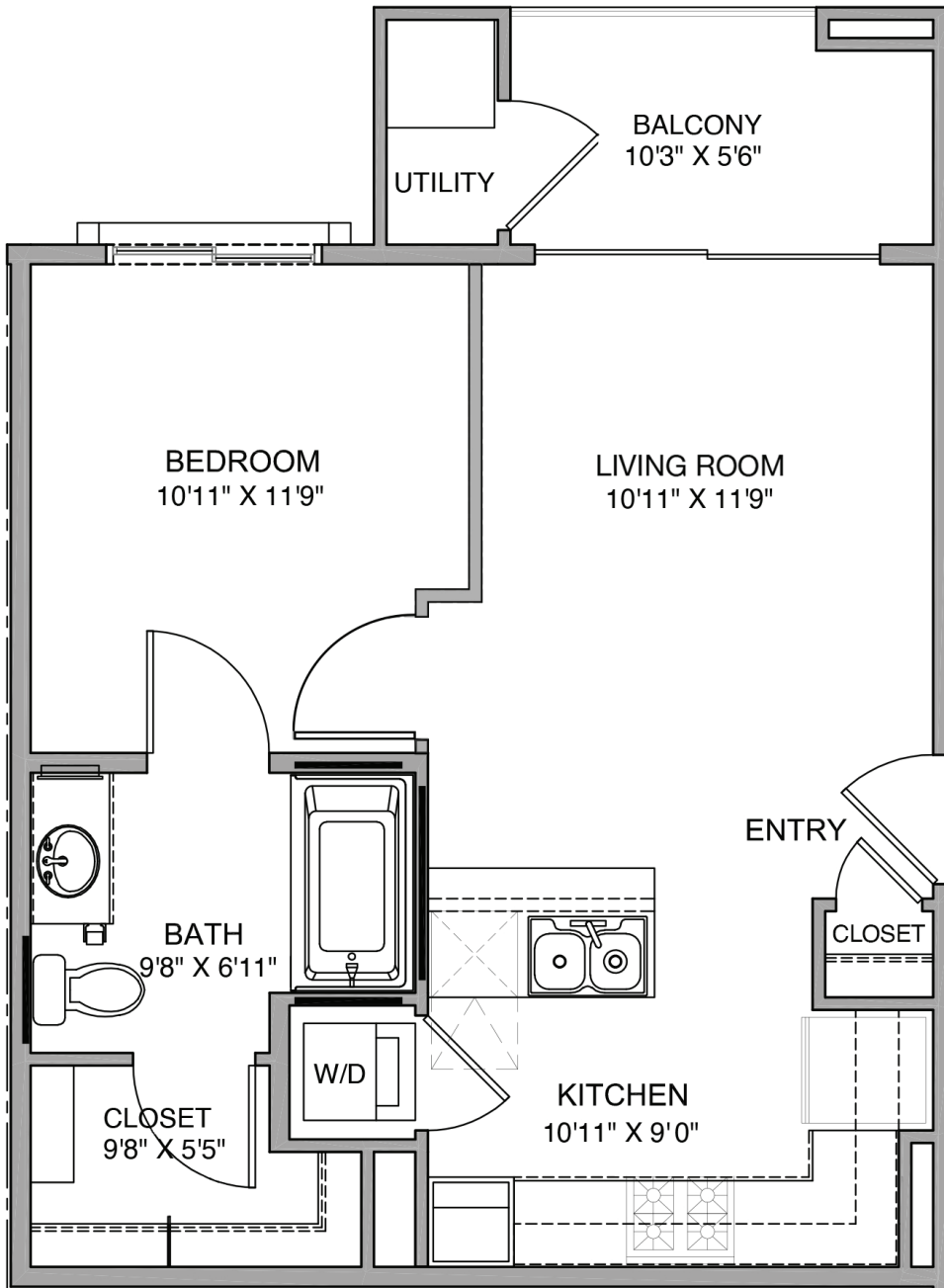




Aurora

Junior 1 Bedroom
Approximately 625 sq. ft.

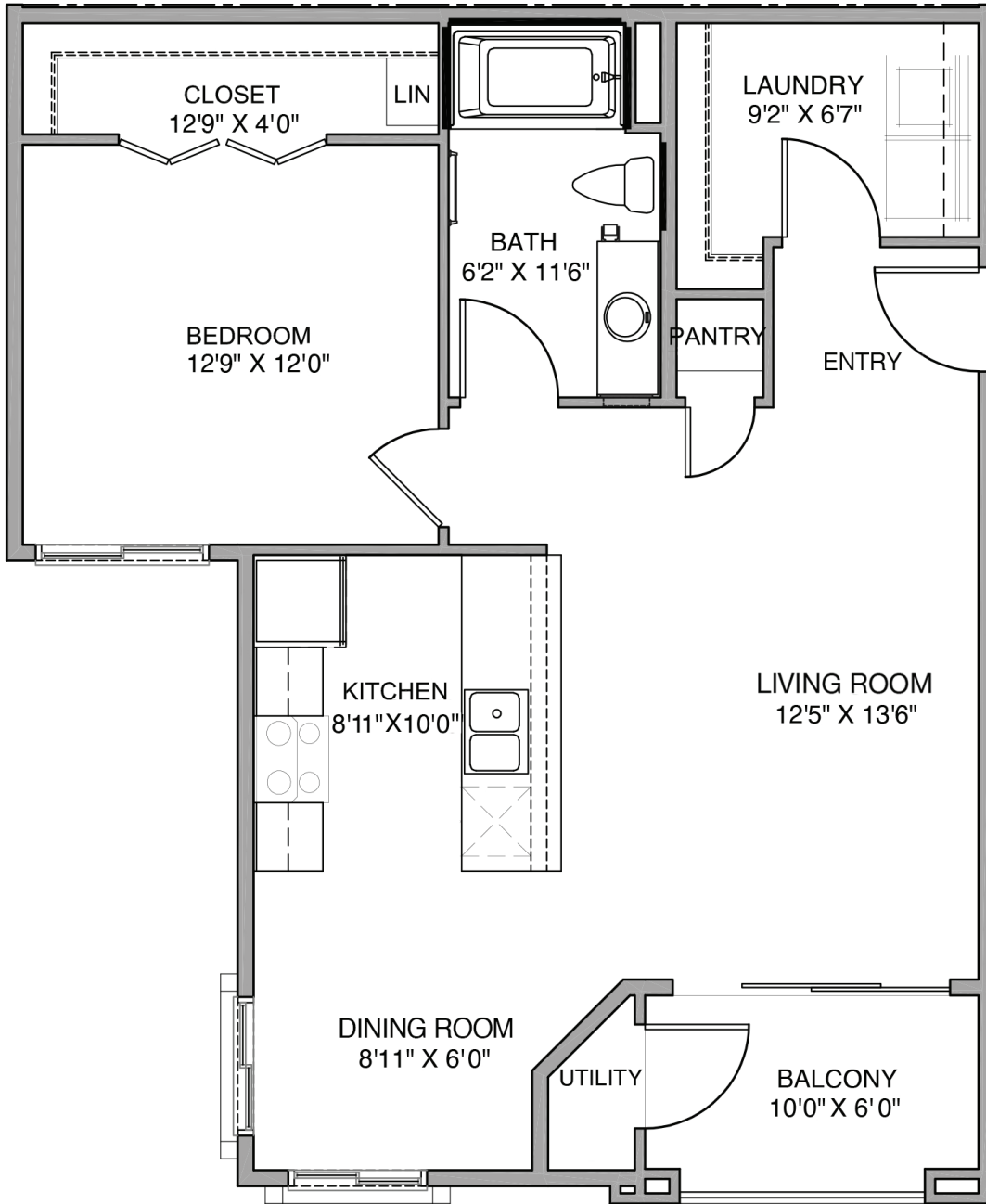
Square footage is approximate and may vary by unit. Availability and pricing subject to change.



Tempest

Junior 1 Bedroom
Approximately 605 sq. ft.

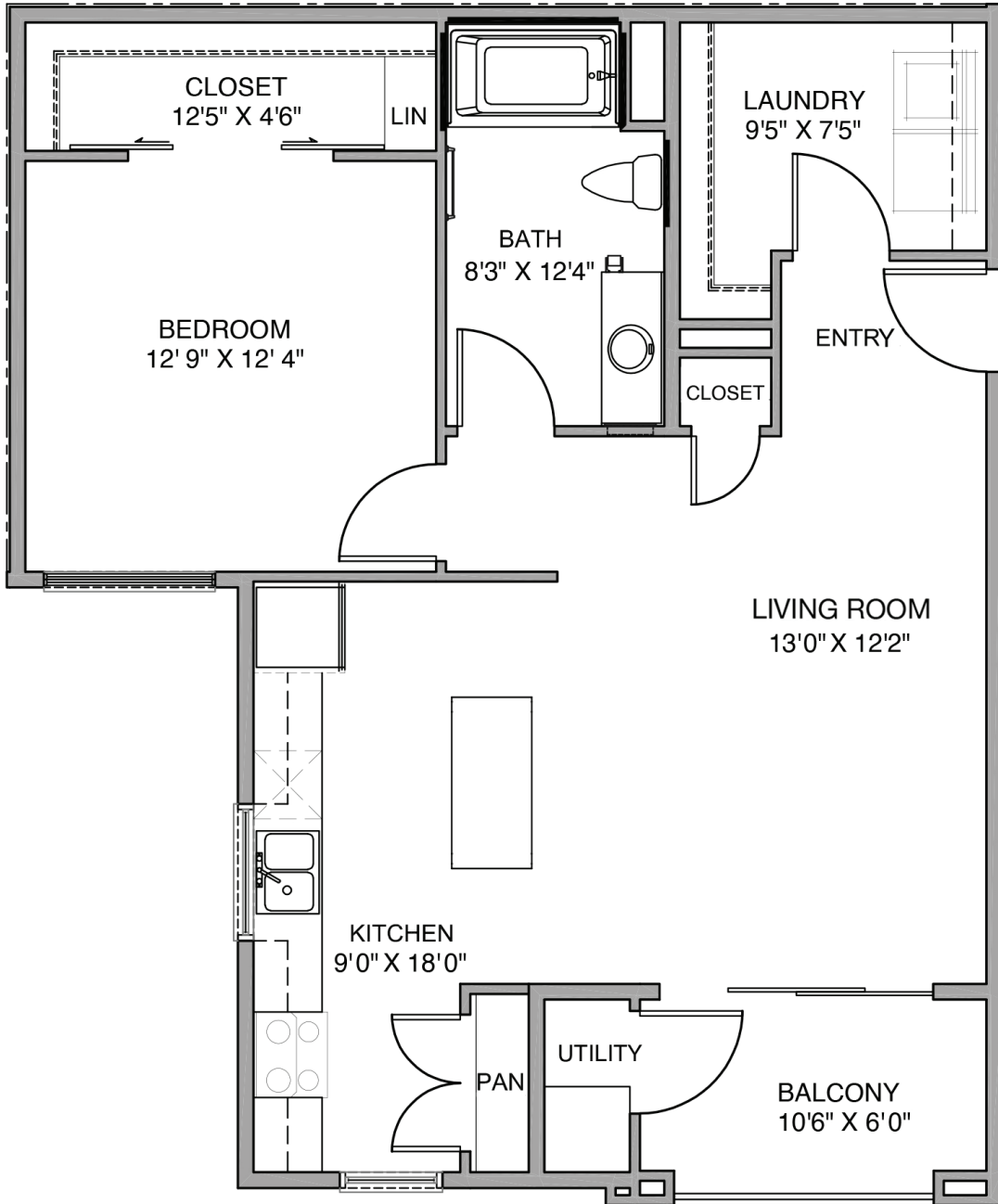
Square footage is approximate and may vary by unit. Availability and pricing subject to change.



Mirage

1 Bedroom / 1 Bathroom
Approximately 863 sq. ft.

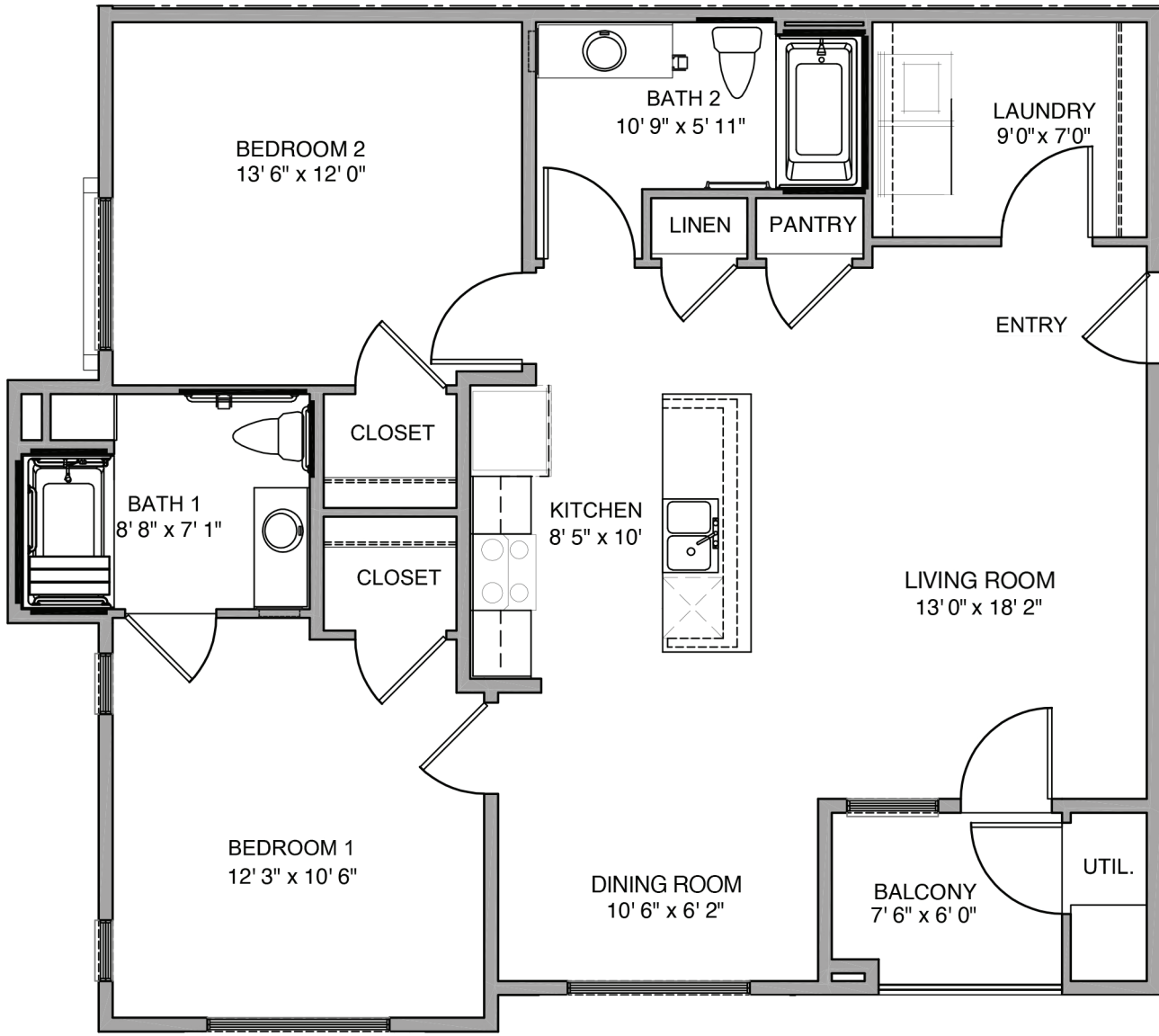
Square footage is approximate and may vary by unit. Availability and pricing subject to change.



Mystique

1 Bedroom / 1 Bathroom
Approximately 899 sq. ft.

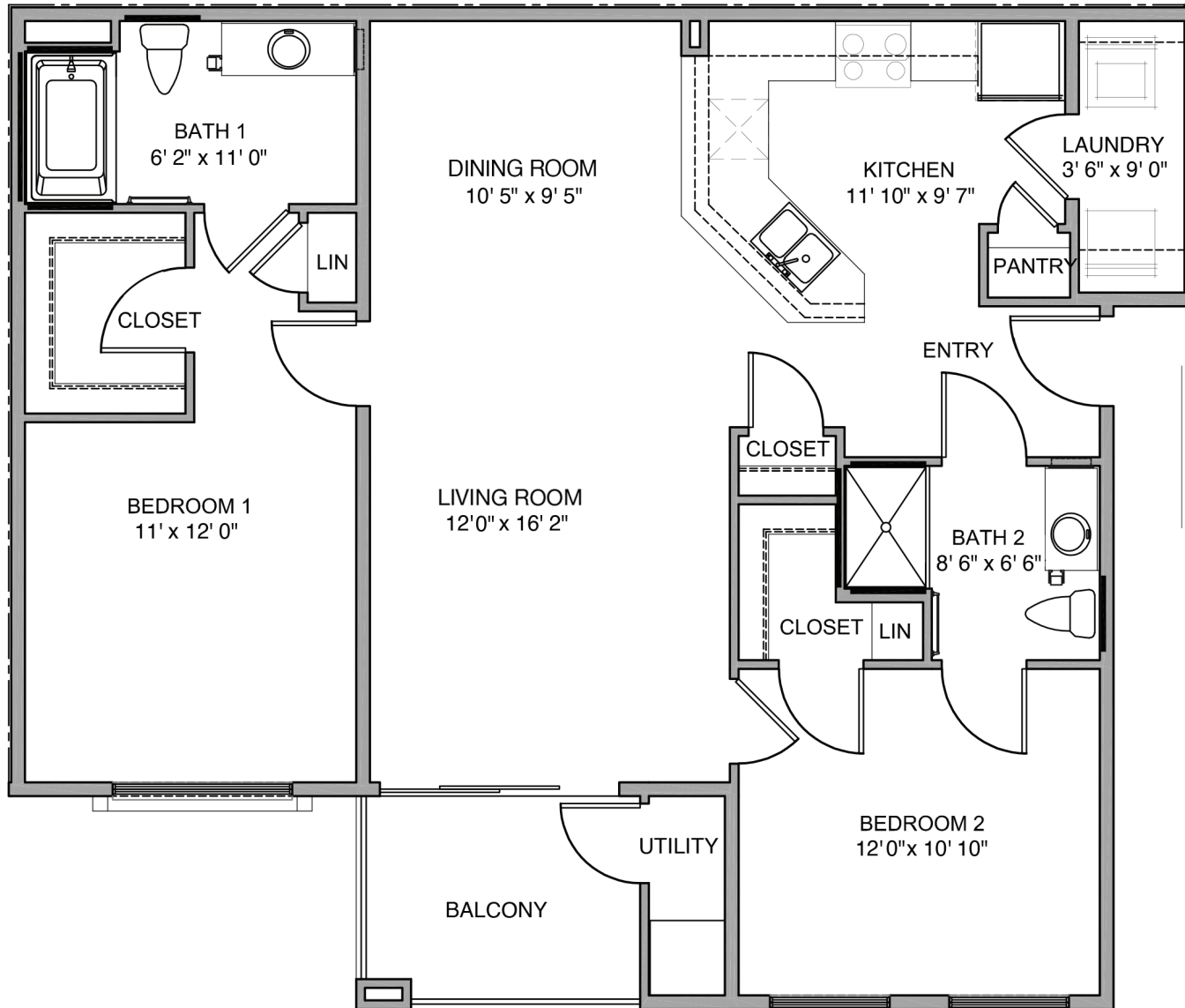
Square footage is approximate and may vary
by unit. Availability and pricing subject to change.



Savannah

2 Bedroom / 2 Bathroom
Approximately 1,180 sq. ft.

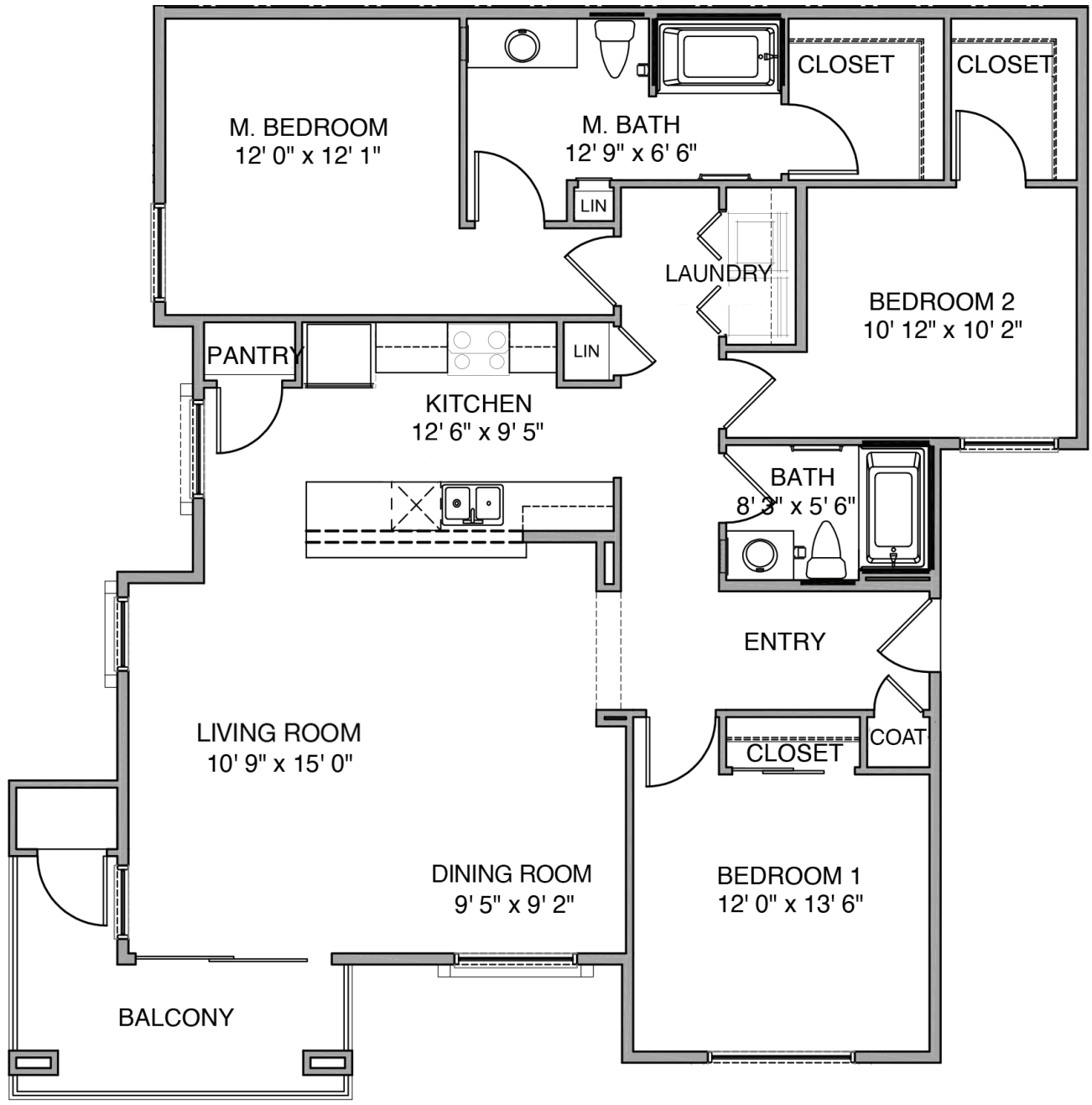
Square footage is approximate and may vary by unit. Availability and pricing subject to change.



Wildscape

2 Bedroom / 2 Bathroom
 Approximately 1,196 sq. ft.

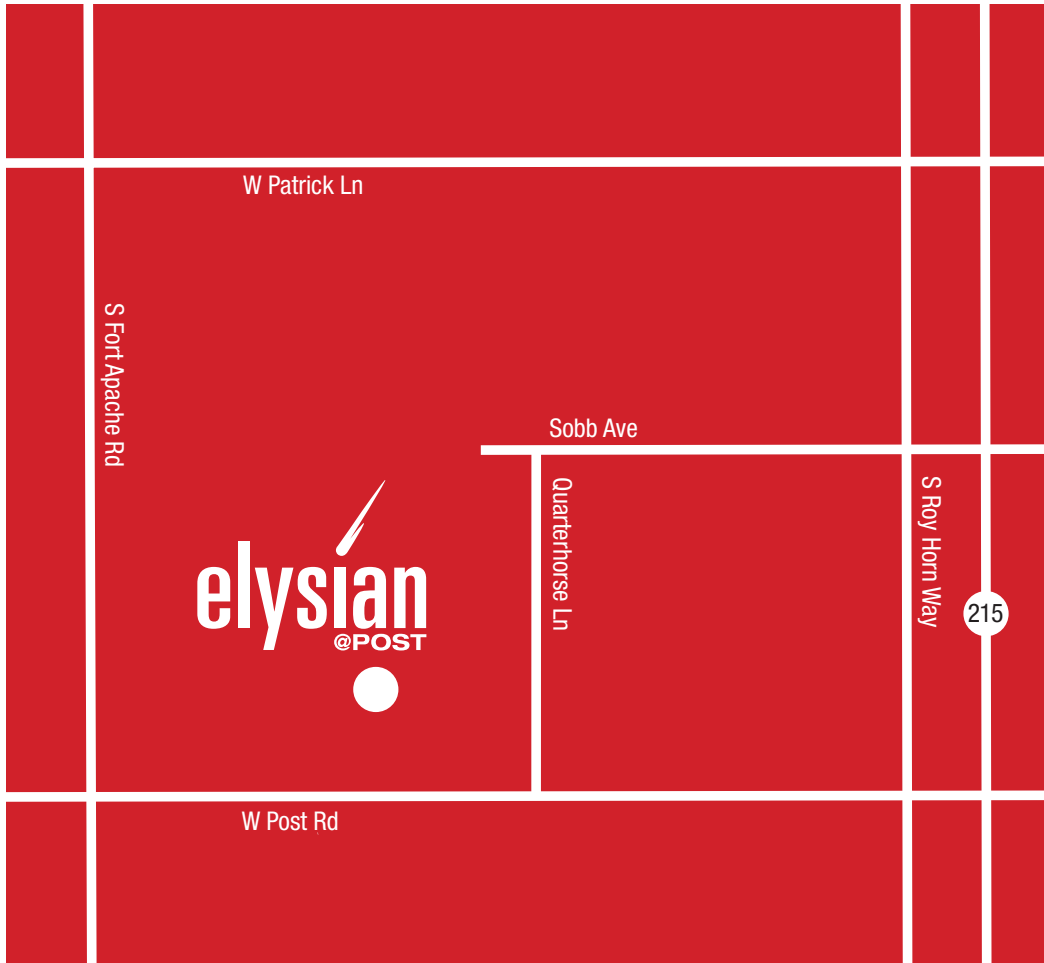
Square footage is approximate and may vary by unit. Availability and pricing subject to change.



Verve

3 Bedroom / 2 Bathroom
 Approximately 1,533 sq. ft.

Square footage is approximate and may vary by unit. Availability and pricing subject to change.



9280 W. Post Rd.
Las Vegas, NV 89148

ElysianLiving.com